



# *LifeScape*

Creating Pathways. Improving Lives.

## Directory of Services



[www.LifeScapeSD.org](http://www.LifeScapeSD.org)

■ Children's Specialty Hospital ■ Outpatient Therapy ■ RISE Custom Solutions

# Contact Us

**Provider-to-Provider  
Referral Hotline**

**605.444.9779**

## Sioux Falls

### **Outpatient Services:**

- Phone **605.444.9700**
- Fax **605.444.9701**

### **Hospital Services:**

- Phone **605.444.9556**
- Fax **605.444.9501**

## Rapid City

- Phone **605.791.7400**
- Fax **605.791.7401**

## Sioux City

- Phone **712.226.2253**
- Fax **712.226.2254**

**[www.LifeScapeSD.org](http://www.LifeScapeSD.org) | [info@LifeScapeSD.org](mailto:info@LifeScapeSD.org)**



# Empowering people to live their best life.

**“ Combining innovation and expertise, we provide exceptional care – close to home – for patients and their families with varied needs across their life span. LifeScape is a destination for research and the development of technology-based solutions to improve people’s lives. ”**

## Dear Colleagues,

At LifeScape we partner with healthcare professionals to provide the very best care for patients and their families. I am pleased to share with you LifeScape’s Directory of Services – a comprehensive resource for primary healthcare professionals and specialists.

The Specialty Hospital at LifeScape offers a unique pediatric unit, providing 24-hour specialized care to infants, children, and young adults through age 21 who have complex medical and rehabilitation needs. We help children and teenagers regain their highest function with our “never say never” motto.

While our history is deeply rooted in pediatric therapy, our highly trained staff can work with individuals of all ages. LifeScape offers specialized outpatient services, including occupational, physical, speech, and behavioral therapy, as well as psychology services. Our affiliate, RISE Custom Solutions, provides orthotic, prosthetic, wheelchair, and other mobility solutions.

Regardless of age, LifeScape provides a variety of services that offer greater independence to children and adults of all ages and abilities. In addition to our Specialty Hospital and Outpatient services, we have a specialty school, residential programs, case management assistance, as well as supported employment and day services.

As a non-profit, community-supported organization, LifeScape is a destination for patients and families to find hope and be supported on their journey. We appreciate your partnership and the trust you have in us to provide the best care to your patients and their families.

**Sincerely,  
Steve Watkins,  
LifeScape CEO**

One team. One mission.

# LifeScape Directory of Services

<b>Table of Contents .....</b>	<b>1</b>
<b>Physical Medicine &amp; Rehabilitation .....</b>	<b>3</b>
<b>Children's Specialty Hospital .....</b>	<b>7</b>
<b>Outpatient Therapy .....</b>	<b>15</b>
<b>RISE Custom Solutions .....</b>	<b>55</b>
<b>LifeScape Executive Leadership .....</b>	<b>64</b>
<b>Medical Executive Committee .....</b>	<b>65</b>
<b>LifeScape Clinicians .....</b>	<b>66</b>
<b>Hospital &amp; Clinic Photos .....</b>	<b>78</b>
<b>Additional Resources .....</b>	<b>84</b>

*Printed: Sept. 2021*

# Table of Contents

■ <b>Physical Medicine &amp; Rehabilitation</b> .....	<b>3</b>	■ <b>Specialty Services (Continued)</b>	
■ <b>Children's Specialty Hospital</b> .....	<b>7</b>	• Parent-Child Interaction Therapy (PCIT) ...	47
• Inpatient Rehabilitation Program .....	8	• Power Mobility .....	48
• Brain Injury Program .....	10	• Sensory Processing Disorder .....	49
• Medically Complex Program .....	12	• Serial Casting .....	50
■ <b>Outpatient Therapy</b> .....	<b>15</b>	• Social Skills Groups .....	51
• Applied Behavioral Analysis .....	17	• Splinting .....	52
• Occupational Therapy .....	18	• Visual Motor Therapy .....	53
• Physical Therapy .....	20	■ <b>RISE Custom Solutions</b> .....	<b>55</b>
• Psychology .....	23	• Cranial Orthoses + CARE Clinic .....	57
• Speech-Language Pathology .....	24	• Orthotics .....	58
■ <b>Interdisciplinary Services</b> .....	<b>27</b>	• Prosthetics .....	60
• Autism Evaluations .....	28	• Wheelchair & Other Mobility Solutions .....	62
• Autism Screenings .....	29	■ <b>LifeScape Executive Leadership</b> .....	<b>64</b>
• CARE Clinic .....	30	■ <b>Medical Executive Committee</b> .....	<b>65</b>
• Complex Care/Spasticity Clinic .....	31	■ <b>LifeScape Clinicians</b> .....	<b>66</b>
• Constipation Management Clinic .....	32	■ <b>Hospital &amp; Clinic Photos</b> .....	<b>78</b>
• Early Start Denver Model (ESDM) .....	33	■ <b>Additional Resources</b> .....	<b>84</b>
• Feeding and Swallowing Program .....	34	• Community Life/Day Services	
• Seating and Wheeled Mobility .....	36	• Conflict-Free Case Management	
• TEAM Clinic .....	37	• Family Support 360	
■ <b>Specialty Services</b> .....	<b>39</b>	• Go Baby Go LifeScape	
• Aquatic Therapy .....	40	• Pathways to Life	
• Assistive Technology .....	41	• Residential Services for Adults	
• Augmentative and Assistive Communication (AAC) .....	42	• Residential Services for Children & Young Adults	
• Bowel and Bladder Therapy .....	44	• School-Based Contract Services	
• Constraint-Induced Movement Therapy (CIMT) .....	45	• Specialty School	
• Intensive Therapy Program .....	46	• Supported Employment	







# Physical Medicine & Rehabilitation

# Physical Medicine & Rehabilitation

## ***Locations:***

### ■ **Sioux Falls, SD**

Phone: 605.444.9727

Fax: 605.444.9701

### ■ **Outreach Clinic – Aberdeen, SD**

Phone: 605.444.9727

Fax: 605.444.9701

## ***Providers:***



**Julie A. Johnson, MD**

Medical Director of  
Rehabilitation Programs



**Charlie Broberg, PA-C**

### ***Referral information:***

- Please call 605.444.727 for additional information or to refer.

### ***Other pages to reference:***

- Brain Injury Program, p. 10
- Complex Care/Spasticity Clinic, p. 31
- Inpatient Rehabilitation Program, p. 8
- Medically Complex Program, p. 12
- Tone Evaluation and Management (TEAM) Clinic, p. 37

Physical medicine and rehabilitation (PM&R) – also known as physiatry or rehabilitative medicine – aims to enhance and restore functional ability and quality of life to those with physical impairments or disabilities. This discipline treats physical impairments affecting the brain, spinal cord, nerves, muscles, and secondary disorders.

### ***We address concerns related to:***

- Brain injury
- Cerebral palsy (CP)
- Congenital brain malformations
- Developmental delays
- Gait abnormalities (difficulty with walking)
- Genetic conditions
- Hemiparesis
- Hypotonia
- Neuromuscular disorders
- Spasticity
- Spinal cord injury, spina bifida, and other spinal cord conditions
- Stroke

### ***On-site treatment options include:***

- Baclofen pump management
- Injections for severe spasticity (outpatient at the Sanford Children's Hospital)
- Medication management
- Physical medicine and rehabilitation clinic
- Assistive technology services
- Orthotic/prosthetic management
- Wheelchair, gait trainer, and other mobility equipment management

### ***We support the following on-site interdisciplinary clinics:***

- Complex Care/Spasticity Clinic
- Tone Evaluation and Management (TEAM) Clinic









# Children's Specialty Hospital



# Inpatient Rehabilitation Program

## Locations:

### ■ Children's Specialty Hospital

2501 W. 26th St., Sioux Falls, SD

Phone: 605.444.9556

Fax: 605.444.9501

## Providers:



**Julie A. Johnson, MD**

Medical Director of  
Rehabilitation Programs



**Charlie Broberg, PA-C**

### Referral information:

- Please call 605.444.9556 for additional information regarding admission and referrals to LifeScape's Inpatient Rehabilitation Program.

### Other pages to reference:

- Brain Injury Program, p. 10
- Physical Medicine & Rehabilitation, p. 4
- Outpatient Therapy, p. 15
- RISE Custom Solutions, p. 55

Our Inpatient Rehabilitation Program is located at the Children's Specialty Hospital, the only pediatric rehabilitation hospital in South Dakota. Our high nurse-to-patient ratio and on-site therapy team allow every child to receive individualized attention. Our clinical team helps children and teens 21 and under regain their highest function and independence after accident, serious illness, or complex surgery.

### We address concerns related to:

- Brain injury
- Post-surgical, including:
  - Post-orthopedic surgery
  - Post-selective dorsal rhizotomy (SDR) surgery
  - Wound care
  - Surgery due to trauma, illness, or injury
- Spinal cord injuries and neurological conditions, including:
  - Guillain-Barre syndrome
  - Transverse myelitis
  - Spina bifida
  - Spinal cord injuries and trauma
- Cancer
- Deconditioning and weakness following illness, injury, or surgery
- Infectious diseases, including meningitis and encephalitis
- Multitrauma
- Post-amputation

**Continued on Next Page**

# Inpatient Rehabilitation Program

## ***Interdisciplinary team:***

- Assistive technology specialists
- Behavior analysts
- Certified nursing assistants
- Clinical dietician
- Clinical psychologists
- Educators
- Family
- Music therapists
- Occupational therapists
- Orthotists
- Pediatric nurse care coordinator
- Pediatric nurses
- Pediatric rehabilitation physician
- Pediatric rehabilitation physician assistant
- Physical therapists
- Primary care physicians
- Prosthetists
- Respiratory therapists
- Seating and mobility specialists
- Social worker
- Speech-language pathologists

## ***Services provided:***

- **Therapy:** 3 hours/day Monday-Friday and a half-day of therapies Saturday-Sunday which may include physical therapy, occupational therapy, speech therapy, and psychology services
- **Splinting and orthotics**
- **Advanced seating and mobility options:** certified seating and mobility specialists are part of the care team
- **Feeding and swallowing:** clinicians with advanced training in providing a comprehensive, multidisciplinary approach to assessment and treatment of feeding and swallowing disorders are part of the care team
- **Adaptive equipment and assistive devices:** equipment selection and training to support activities of daily living and independence with walking
- **Assistive Technology:**
  - **Augmentative and alternative communication (AAC) devices:** ranging from high-tech eye-gaze devices to lower-tech picture communication boards
  - **Specialty switches:** for control of computers, power wheelchair, communication device, or phone

- **Environmental controls:** through the use of Bluetooth technology, adapted switches, and/or infrared controls, patients can learn to access their environment in new ways

## ■ **Therapeutic equipment, including:**

- Lite Gait® body-weight supported device for gait training
- Neuromuscular Electrical Stimulation (NMES)
- Solo-Step®

## ■ **Therapeutic spaces, including:**

- Adapted outdoor playground
- Adapted therapeutic kitchen
- Assistive technology room
- Family apartment
- Multimedia center
- Snoezelen multi-sensory room
- Therapy gym
- Warm water therapeutic pool

## ■ **Community transition experiences**

## ■ **Discharge planning and coordination of care**

## ■ **Family collaboration and training**

## ■ **LifeScape's continuum of care**

- Outpatient services available in Sioux Falls, SD; Rapid City, SD; and Sioux City, IA
- Seamless transition to outpatient therapy services
- Intensive day rehabilitation available
- RISE Custom Solutions offers ongoing medical equipment, orthotic, and prosthetic care and support in Sioux Falls, SD; Rapid City, SD; Sioux City, IA; and at select outreach clinics

# Brain Injury Program

## Locations:

### ■ Children's Specialty Hospital

2501 W. 26th St., Sioux Falls, SD

Phone: 605.444.9556

Phone: 605.444.9501

## Providers:



**Julie A. Johnson, MD**

Medical Director of  
Rehabilitation Programs



**Charlie Broberg, PA-C**

### **Referral information:**

- Please call 605.444.9556 for additional information regarding admission and referrals to LifeScape's Brain Injury Program.

### **Other pages to reference:**

- Inpatient Rehabilitation Program, p. 8
- Physical Medicine & Rehabilitation, p. 4
- Outpatient Therapy, p. 15
- RISE Custom Solutions, p. 55

Our Brain Injury Program provides high-quality collaborative care to children and young adults who may have experienced the following medical conditions related to traumatic and non-traumatic brain injuries:

- Anoxic event
- Brain bleeds/bruising
- Diffusional axonal injury
- Infection (encephalitis and meningitis)
- Stroke
- Severe concussion
- Tumors

### **Highlights:**

- Our comprehensive team of rehabilitation professionals collaborates to identify and treat the patient's specific needs to provide the best possible care, training, and education throughout the course of treatment.
- LifeScape's Brain Injury Program is led by a team of specially trained inpatient and outpatient therapists and professionals who excel at preparing patients and families for the transition back to home, school, and community.
- Eight Certified Brain Injury Specialists (CBIS) on staff across 3 program areas

### **Goals of program:**

- Improve individuals' ability to function at home and in their community
- Treat the mental and physical conditions related to a brain injury
- Provide social and emotional support
- Help individuals adapt to changes as they occur during their recovery
- Provide patient and family education related to brain injury
- Advocate for individuals with a brain injury

**Continued on Next Page**



# Brain Injury Program

## Program Features and Services:

### Inpatient Rehabilitation

Inpatient rehabilitation at Children's Specialty Hospital focuses on the delivery of comprehensive care and individualized treatment plans to meet the unique needs of each patient. Our highly trained team of professionals work collaboratively with patients and families to improve health and function.

- Three or more hours per day of core therapies (physical therapy, occupational therapy, speech therapy, and psychology services) overseen by a rehabilitation physician
- Weekend therapy on both Saturdays and Sundays
- 24-hour nursing care
- Additional services including social work, psychology, nutrition, music therapy, education, and behavior therapy
- Family apartment for family visits and focus on family training
- Emotional support for patients and families
- Discharge planning and preparation
- Continuum of care
- State of the art assistive technology

*\*For additional information regarding LifeScape's Inpatient Rehabilitation Program, please refer to p. 8*

### Intensive Day Therapy Rehabilitation

Our Intensive Day Rehabilitation Program provides structured, comprehensive, and coordinated outpatient care tailored to each individual's specific needs and treatment goals. This option is ideal for patients who are well enough to be discharged home but still require intensive therapy with multiple providers.

- Individualized therapy sessions, 2-3 hours a day, at least 3 days a week
- Coordinated appointments
- Collaboration with rehabilitation physician and primary physician
- Waiting space for families
- Team-oriented approach
- Social worker to assist with coordination of care
- Return to school assistance

### Outpatient Rehabilitation Therapy Services

Following an inpatient rehabilitation stay, most patients will require rehabilitation on an ongoing basis.

LifeScape provides a continuum of care, allowing patients to seamlessly continue with outpatient services upon discharge from inpatient rehabilitation.

- Outpatient services available in Sioux Falls, SD; Rapid City, SD; and Sioux City, IA
- RISE Custom Solutions offers ongoing medical equipment, orthotic, and prosthetic care and support in Sioux Falls, SD; Rapid City, SD; Sioux City, IA; and at select outreach clinics
- Comprehensive services in one location
- Therapy services for all ages

# Medically Complex Program

## Locations:

### ■ Children's Specialty Hospital

2501 W. 26th St., Sioux Falls, SD

Phone: 605.444.9556

Phone: 605.444.9501

## Providers:



**Julie A. Johnson, MD**

Medical Director of  
Rehabilitation Programs



**Charlie Broberg, PA-C**

### **Referral information:**

- Please call 605.444.9556 for additional information regarding admission to LifeScape's Medically Complex Program.

### **Other pages to reference:**

- Physical Medicine & Rehabilitation, p. 4
- Outpatient Therapy, p. 15
- RISE Custom Solutions, p. 55

LifeScape's Medically Complex Program is located at the Children's Specialty Hospital, the only pediatric rehabilitation hospital in South Dakota and the surrounding area. The Children's Specialty Hospital at LifeScape offers a unique pediatric unit, providing 24-hour specialized care to infants, children, and teens who have complex medical needs. Our high nurse-to-patient ratio and on-site therapy team allow every child to receive individualized attention.

### **We address concerns related to:**

- Anoxic event
- Brain injury
- Cancer
- Cardiopulmonary care
- Complex medical conditions
- Complex neurological conditions
- Guillain-Barre syndrome
- Infectious disease, including meningitis and encephalitis
- IV therapy
- Palliative care
- Post-NICU and complications of premature birth
- Post-surgical care
- Respiratory support and ventilator weaning
- Spinal cord injuries and disorders
- Trauma

### **Services provided:**

- **Therapy services:** which may include physical therapy, occupational therapy, speech therapy, and psychology services
- **Splinting and orthotics**
- **Advanced seating and mobility options:** certified seating and mobility specialists are part of the care team
- **Feeding and swallowing:** clinicians with advanced training in providing a comprehensive, multidisciplinary approach to assessment and treatment of feeding and swallowing disorders are part of the care team

**Continued on Next Page**

# Medically Complex Program

## Services provided:

- **Adaptive equipment and assistive devices:**  
equipment selection and training to support activities of daily living and independence with walking
- **Assistive Technology:**
  - **Augmentative and alternative communication (AAC) devices:** ranging from high-tech eye-gaze devices to lower-tech picture communication boards
  - **Specialty switches:** for control of computers, power wheelchair, communication device, or phone
  - **Environmental controls:** through the use of Bluetooth technology, adapted switches, and/or infrared controls, patients can learn to access their environment in new ways
- **Therapeutic equipment and spaces, including:**
  - Adapted outdoor playground
  - Adapted therapeutic kitchen
  - Assistive technology room
  - Family apartment
  - Lite Gait® body-weight supported device for gait training
  - Multimedia center
  - Neuromuscular electrical stimulation (NMES)
  - Snoezelen multi-sensory room
  - Solo-Step®
  - Therapy gym
  - Warm water therapeutic pool
- **Community transition experiences**
- **Discharge planning and coordination of care**
- **Family collaboration and training**
- **LifeScape's continuum of care**
  - Outpatient services available in Sioux Falls, SD; Rapid City, SD; and Sioux City, IA
  - Seamless transition to outpatient therapy services
  - Intensive day rehabilitation available
  - RISE Custom Solutions offers ongoing medical equipment, orthotic, and prosthetic care and support in Sioux Falls, SD; Rapid City, SD; Sioux City, IA; and at select outreach clinics

## Interdisciplinary team:

- Assistive technology specialists
- Behavior analysts
- Certified nursing assistants
- Clinical dietitian
- Clinical psychologists
- Educators
- Family
- Music therapist
- Occupational therapists
- Orthotists
- Pediatric nurse care coordinator
- Pediatric nurses
- Pediatric rehabilitation physician
- Pediatric rehabilitation physician assistant
- Physical therapists
- Primary care physicians
- Prosthetists
- Respiratory therapists
- Seating and mobility specialists
- Social worker
- Speech-language pathologists







# Outpatient Therapy

Outpatient Therapy







# Applied Behavior Analysis

## Locations:

### ■ **Sioux Falls, SD**

Phone: 605.444.9700

Fax: 605.444.9701

### ■ **Rapid City, SD**

Phone: 605.791.7400

Fax: 605.791.7401

Applied Behavior Analysis (ABA) uses the principles of learning to teach or improve critical skills needed for independence. Our ABA therapy program provides intensive ABA intervention to children with autism and other developmental disabilities.

Each program is designed and supervised by a Master's or Doctoral-level Board Certified Behavior Analyst (BCBA or BCBA-D) and is tailored to meet the specific needs of each individual. Parent involvement and training is essential for skill progression and is a central concept in our outpatient behavior program.

### **ABA services address the following skill areas:**

- Adaptive living skills (eating, dressing)
- Basic academic and pre-academic skills
- Expressive language (labeling objects, asking for items)
- Food refusal/acceptance
- Hygiene activities
- Imitation (important precursor to developing other life skills)
- Play and leisure skills (toy play, expanding interests)
- Pre-academic behaviors (sitting in a chair at a desk or table, refraining from grabbing materials)
- Receptive language (following directions, identifying objects)
- Social skills (initiating conversations, responding to questions, engaging in interactive play)
- Toilet training
- Teaching socially acceptable replacement skills for problem behavior, including:
  - Non-compliance
  - Physical aggression
  - Repetitive behaviors
  - Self-injury

### **Referral information:**

- Script should say "ABA Eval and Treat."  
A diagnosis of autism is required for insurance coverage of ABA services.

### **Other pages to reference:**

- Autism Evaluations, p. 28
- Autism Screenings, p. 29
- Early Start Denver Model (ESDM), p. 33
- Psychology, p. 23

# Occupational Therapy

## Locations:

### ■ **Sioux Falls, SD**

Phone: 605.444.9700

Fax: 605.444.9701

### ■ **Rapid City, SD**

Phone: 605.791.7400

Fax: 605.791.7401

### ■ **Sioux City, IA**

Phone: 712.226.2253

Fax: 712.226.2254

## Referral information:

- Script should say "OT Eval and Treat."  
Write "Sensory" in notes, if applicable.

## Other pages to reference:

- Aquatic Therapy, p. 40
- Assistive Technology, p. 41
- Autism Evaluations, p. 28
- Autism Screenings, p. 29
- Brain Injury Program, p. 10
- Constipation Management Clinic, p. 32
- Constraint-Induced Movement Therapy, p. 45
- Early Start Denver Model (ESDM), p. 33
- Feeding and Swallowing, p. 34
- Intensive Therapy Program, p. 46
- Power Mobility, p. 48
- Seating and Wheeled Mobility, p. 36
- Sensory Processing Disorder, p. 49
- Serial Casting, p. 50
- Splinting, p. 52
- TEAM Clinic, p. 37
- Visual Motor Therapy, p. 53

Our occupational therapists focus on improving patients' functional life skills and facilitating appropriate development. We serve individuals of all ages with an emphasis on enhancing the fine motor, self-care, and self-regulation skills needed to be successful in everyday activities. Our goal with each patient is to improve engagement in necessary activities, restore and enhance function while preventing further disability, and help the patient lead a more independent and active life.

## ***Our occupational therapists evaluate and treat patients with a wide variety of diagnoses, including but not limited to:***

- Autism spectrum disorder (ASD)
- Brain injury
- Cerebral palsy (CP)
- Down syndrome
- Genetic conditions
- Orthopedic conditions
- Spina bifida
- Spinal cord injury or disorder
- Stroke
- Other complex medical conditions impacting development
- Other neurological and neuromuscular conditions

## ***Continued on Next Page***

# Occupational Therapy

**Services provided:**

- Evaluation and treatment of patients with the following concerns:
  - Activities of Daily Living (ADL) difficulties
  - Coordination impairments and weakness
  - Developmental delays
  - Feeding difficulties
  - Fine motor delays
  - Genetic conditions
  - Incontinence and constipation
  - Sensory processing difficulties
  - Social-emotional difficulties
  - Visual motor and visual perceptual impairments
- Constraint-induced movement therapy (CMT)
- Intensive therapies (higher frequency, longer treatment sessions, shorter overall duration of services)
- Post-surgical rehabilitation related to neuromuscular and musculoskeletal impairments
- Primitive reflex integration
- Upper extremity serial casting
- Upper extremity splinting



# Physical Therapy

## Locations:

### ■ **Sioux Falls, SD**

Phone: 605.444.9700

Fax: 605.444.9701

### ■ **Rapid City, SD**

Phone: 605.791.7400

Fax: 605.791.7401

### ■ **Sioux City, IA**

Phone: 712.226.2253

Fax: 712.226.2254

### **Referral information:**

- Script should say "PT Eval and Treat."

### **Other pages to reference:**

- Aquatic Therapy, p. 40
- Bowel and Bladder Therapy, p. 44
- Brain Injury Program, p. 10
- CARE Clinic, p. 30
- Complex Care Clinic, p. 31
- Constipation Management Clinic, p. 32
- Intensive Therapy Program, p. 46
- Power Mobility, p. 48
- Seating and Wheeled Mobility, p. 36
- Serial Casting, p. 50
- TEAM Clinic, p. 37

Our physical therapists focus on improving patients' function and mobility. We serve individuals of all ages with an emphasis on developing important motor skills and identifying the most appropriate equipment to allow children and adults to navigate and explore their environments and participate in peer and family activities. The goal for each patient is to acquire safe and efficient mobility, reduce or manage pain, restore or enhance function, prevent or minimize disability, and help the individual reach his or her maximum physical potential.

### ***Our physical therapists evaluate and treat patients with a wide variety of diagnoses, including but not limited to:***

- Autism spectrum disorder (ASD)
- Brain injury
- Cerebral palsy (CP)
- Complex Regional Pain Syndrome
- Down syndrome
- Dystrophies
- Genetic conditions
- Orthopedic conditions
- Spina bifida
- Spinal cord injury or disorder
- Stroke
- Toe-walking
- Torticollis
- Other complex medical conditions impacting development
- Other neurological and neuromuscular conditions

### ***Continued on Next Page***

# Physical Therapy

**Services provided:**

- Evaluation and treatment of patients with the following concerns:
  - Balance and coordination impairments
  - Chronic pain
  - Concerns with alignment
  - Decreased strength, ROM, and endurance
  - Developmental delays
  - Difficulty walking and gait abnormalities
  - Gross motor delays
  - Impaired mobility
  - Incontinence and constipation
- Aquatic therapy
- Biofeedback therapy for incontinence, constipation, and pelvic floor impairments
- Evaluation for adaptive equipment (wheelchairs, gait trainers, standers, bath equipment, etc.)
- Gait training
- Intensives (higher frequency, longer treatment sessions, shorter duration) using the TheraSuit Method® Universal Exercise Unit, if appropriate
- Lower extremity serial casting
- Manual and power wheelchair mobility
- Post-surgical rehabilitation related to neuromuscular and musculoskeletal impairments
- Serial casting





## Locations:

### ■ **Sioux Falls, SD**

Phone: 605.444.9700

Fax: 605.444.9701

### **Referral information:**

- No script required for general psychology services; however, provider can call or send script to indicate patient's need for psychology services. Script required for ADHD and IQ testing; script should say "ADHD testing" or "IQ testing."

### **Other pages to reference:**

- Applied Behavioral Analysis, p. 17
- Autism Evaluations, p. 28
- Autism Screenings, p. 29
- Brain Injury Program, p. 10
- Constipation Management Clinic, p. 32
- Feeding and Swallowing, p. 34
- Parent-Child Interaction Therapy (PCIT), p. 47

Our licensed clinical psychologists provide outpatient therapy and support services to children, youth, adults, and their families. Our psychologists primarily use a cognitive behavioral approach with a person-centered focus. Psychological evaluations including specialized testing and personalized treatment planning are utilized to best meet our patients' needs.

### ***Our psychologists address concerns related to a wide variety of diagnoses, including but not limited to:***

- ADHD
- Anxiety
- Autism spectrum disorder (ASD)
- Brain injury
- Chronic medical conditions
- Depression and mood disorders
- Other complex medical conditions impacting development
- Other neurological and neuromuscular conditions

### **Services provided:**

- Therapy and support services to address concerns related to:
  - Adjustment problems and life transitions
  - Feeding concerns
  - Bowel and bladder concerns
  - Chronic medical conditions
  - Grief and coping
  - Sibling relationships and conflict
  - Trauma
- Individual and family sessions
- Parent-Child Interaction Therapy (PCIT)
- Parenting support and behavioral interventions with children
- Psychological testing and assessment
- Social skill development within a group or individual setting
- Supportive therapy for parents and families of children with disabilities



# Speech-Language Pathology

## Locations:

### ■ **Sioux Falls, SD**

Phone: 605.444.9700

Fax: 605.444.9701

### ■ **Rapid City, SD**

Phone: 605.791.7400

Fax: 605.791.7401

### ■ **Sioux City, IA**

Phone: 712.226.2253

Fax: 712.226.2254

## Referral information:

- Script should say "ST Eval and Treat."

## Other pages to reference:

- Assistive Technology, p. 41
- Augmentative and Assistive Communication (AAC), p. 42
- Autism Evaluations, p. 28
- Autism Screenings, p. 29
- Brain Injury Program, p. 10
- Early Start Denver Model (ESDM), p. 33
- Feeding and Swallowing, p. 34
- Intensive Therapy Program, p. 46

Our speech-language pathologists focus on improving functional communication and feeding and swallowing skills. We serve patients of all ages with a focus on receptive and expressive language, articulation, feeding, and augmentative and alternative communication. The goal for each individual is to reach his or her full potential and improve independent living through a functional mode of communication, enjoyable and adequate feeding and swallowing, intelligible speech, and social interactions.

## ***Our speech-language pathologists evaluate and treat patients with a wide variety of diagnoses, including but not limited to:***

- ADHD
- Autism spectrum disorder (ASD)
- Brain injury
- Cerebral palsy (CP)
- Cerebral visual impairment (CVI)
- Degenerative medical conditions affecting speech, communication, and feeding and swallowing, including:
  - Amyotrophic Lateral Sclerosis (ALS)
  - Multiple sclerosis (MS)
  - Muscular dystrophy
  - Parkinson's disease
- Down syndrome
- Dysarthria
- Genetic conditions
- Hearing impairment
- Pervasive developmental disorder (PDD)
- Stroke
- Other complex medical conditions impacting development
- Other neurological and neuromuscular conditions

## ***Continued on Next Page***

# Speech-Language Pathology

**Services provided:**

- Evaluation and treatment of patients with the following concerns:
  - Difficulty with cognitive-linguistic skills
  - Feeding and swallowing concerns including behavioral feeding issues, dysphagia, and oral motor concerns
  - Fluency and stuttering concerns
  - Speech delays and disorders, including:
    - Apraxia
    - Articulation disorders/delays
    - Expressive/receptive language delays
    - Phonological disorder
- Augmentative and alternative communication (AAC) device evaluation and training
- Intensive therapies (higher frequency, longer treatment sessions, shorter overall duration of services)
- Social skill development within a group or individual setting
- Therapy utilizing Neuromuscular Electrical Stimulation (NMES)
- Voice banking for declining speech due to a progressive neuromuscular diagnosis







# Interdisciplinary Services



# Autism Evaluations

## Locations:

### ■ **Sioux Falls, SD**

Phone: 605.444.9700

Fax: 605.444.9701

### ■ **Rapid City, SD**

Phone: 605.791.7400

Fax: 605.791.7401

LifeScope is dedicated to early identification and treatment of autism spectrum disorders (ASD). Our interdisciplinary team consisting of a psychologist, speech-language pathologist, and occupational therapist will assess your child using gold-standard autism assessments, discipline-specific tests, and a full review of medical and educational records. ASD can be identified in children as young as one year of age.

LifeScope offers both medical and educational diagnostic autism evaluations, working with most insurances, including South Dakota Medicaid, as well as school districts.

## Services provided:

- Assessment of the common signs of autism, including:
  - Limited eye contact
  - Repetitive speech or body movements
  - Sensory sensitivities to sound, textures, and movement
  - Not responding to name being called
  - Rigid daily routines
  - Intense interest in a specific topic or item
  - Lining up or organizing items or toys
  - Limited play with peers

## Referral information:

- Script should say "Autism Eval and Treat."

## Other pages to reference:

- Applied Behavior Analysis, p. 17
- Autism Screenings, p. 29
- Early Start Denver Model (ESDM), p. 33
- Occupational Therapy, p. 18
- Psychology, p. 23
- Speech-Language Pathology, p. 24

# Autism Screenings

## Locations:

### ■ **Sioux Falls, SD**

Phone: 605.444.9700

Fax: 605.444.9701

### ■ **Rapid City, SD**

Phone: 605.791.7400

Fax: 605.791.7401

LifeScape is dedicated to early identification and treatment of autism spectrum disorders (ASD). LifeScape offers free autism screenings for children four years of age and younger. A team of professionals will talk with you about your child's developmental milestones, interact with your child, and help to determine whether a full autism evaluation or other services are warranted. No referral is needed for a screening, and it takes only one hour to complete.

## Services provided:

- Assessment of the common signs of autism, including:
  - Limited eye contact
  - Repetitive speech or body movements
  - Sensory sensitivities to sound, textures, and movement
  - Not responding to name being called
  - Rigid daily routines
  - Intense interest in a specific topic or item
  - Lining up or organizing items or toys
  - Limited play with peers

## Referral information:

- No script required.

## Other pages to reference:

- Applied Behavior Analysis, p. 17
- Autism Evaluations, p. 28
- Early Start Denver Model (ESDM), p. 33
- Occupational Therapy, p. 18
- Psychology, p. 23
- Speech-Language Pathology, p. 24

# CARE Clinic (Cranial Asymmetry Repositioning Evaluation)

## Locations:

### ■ **Sioux Falls, SD**

Phone: 605.444.9700

Fax: 605.444.9701

### ■ **Rapid City, SD**

Phone: 605.791.7400

Fax: 605.791.7401

### ■ **Sioux City, IA**

Phone: 712.226.2253

Fax: 712.226.2254

## Referral information:

- Script should say "Helmet/PT Eval and Treat." Write "CARE Clinic" in notes.

## Other pages to reference:

- Orthotics, p. 58
- Physical Therapy, p. 20

LifeScope and RISE Custom Solutions offer a team approach to the evaluation and treatment of plagiocephaly and torticollis with our CARE (Cranial Asymmetry Repositioning Evaluation) Clinic. These diagnoses are on the rise, can be difficult to detect, and often occur together. The clinical team of physical therapists and orthotists aim to provide comprehensive care for both diagnoses.

## We address concerns related to:

- Plagiocephaly
- Torticollis
- Brachycephaly
- Post-operative craniosynostosis
- Scaphocephaly

## Services provided:

- Physical therapy evaluation and treatment of torticollis and other contributing muscle imbalances, including:
  - Range of motion exercises
  - Education on repositioning ideas to discourage the child's preferred position to address head shape concerns
  - Strengthening to decrease asymmetries that may be occurring
- Prevention and treatment of plagiocephaly
- Orthotic intervention through the use of a custom Cranial Remolding Orthosis (CRO), including:
  - Taking images and anthropometric head shape measures with the following options:
    - STARscanner™ system using Class 1, eye-safe lasers
    - Portable SmartSoc® scanning capturing markers on a cranial sock
  - Fabrication and fitting of, as well as necessary patient care for, a custom-made STARband remolding helmet from an FDA-certified manufacturer

# Complex Care/Spasticity Clinic

## Locations:

### ■ **Sioux Falls, SD**

Phone: 605.444.9727

Fax: 605.444.9701

## Providers:



**Julie A. Johnson, MD**  
**Pediatric Rehabilitation**

Medical Director of  
Rehabilitation Programs



**Jared Daniel, MD**  
**Pediatric Orthopedics**

### **Referral information:**

- Referrals to Complex Care/Spasticity Clinic can be made by Dr. Julie Johnson, Charles Broberg, or Dr. Jared Daniel. Please call 605.444.9727 for additional information.

### **Other pages to reference:**

- Orthotics, p. 58
- Physical Medicine & Rehabilitation, p. 3
- Physical Therapy, p. 20
- TEAM Clinic, p. 37

LifeScope's Complex Care/Spasticity Clinic is an interdisciplinary clinic led by medical staff from Sanford's Physical Medicine and Rehabilitation and Orthopedics Departments. The clinical team also includes a physical therapist and orthotist, with an equipment specialist, equipment technician, and occupational therapist available, if needed.

Complex Care/Spasticity Clinic is designed to provide an interdisciplinary approach to the evaluation and management of the patient's physiatry and orthopedic concerns. The team will also provide referrals and collaborate with other healthcare specialists, as needed. The collaboration between disciplines will allow comprehensive evaluation and management of the child's complex medical, equipment, and therapeutic needs.

### **Conditions treated:**

- Brain injury
- Cerebral palsy (CP)
- Dystonia
- Hypotonia
- Neurological illness/injury
- Neuromuscular illness/disease
- Orthopedic conditions
- Spasticity
- Spina bifida



# Constipation Management Clinic

## Locations:

### ■ **Sioux Falls, SD**

Phone: 605.444.9700

Fax: 605.444.9701

### ■ **Rapid City, SD**

Phone: 605.791.7400

Fax: 605.791.7401

## Referral information:

- Script should say "PT/OT Eval and Treat." Write "Constipation Management Clinic" in notes, with diagnosis related to bowel/bladder concerns.

## Other pages to reference:

- Bowel and Bladder Therapy, p. 44
- Occupational Therapy, p. 18
- Physical Therapy, p. 20
- Psychology, p. 23

LifeScope's Constipation Management Clinic uses an interdisciplinary approach to constipation management for children ages 4 and older. The team consists of a physical therapist, occupational therapist, and clinical psychologist, working in collaboration with a child's team of medical providers to comprehensively address concerns and establish a treatment program.

## We address concerns related to:

- Chronic constipation
- Concerns associated with constipation, including:
  - Significant stool withholding
  - Behaviors surrounding toileting, including fear, refusals, and meltdowns
  - Sensory concerns related to the bathroom environment or toileting, including awareness of bowel urges

## Services provided:

- Multidisciplinary evaluation
- Treatment strategies, which may include:
  - **Physical Therapy:** biofeedback for pelvic floor muscle strengthening and coordination, core strengthening, and breathing coordination techniques
  - **Occupational Therapy:** sensory modulation, interoceptive awareness, toilet hygiene, and clothing management
  - **Psychology:** reinforcement systems, anxiety management, and behavioral modifications
- Comprehensive home program recommendations

# Early Start Denver Model (ESDM)

## Locations:

### ■ **Sioux Falls, SD**

Phone: 605.444.9700

Fax: 605.444.9701

The Early Start Denver Model (ESDM) targets skills across developmental domains for children 1 to 5 years of age with or at risk for autism spectrum disorder (ASD), incorporating naturalistic, developmental, and behavioral treatment methods. Goals are addressed through play-based activities that are appropriate for young children and highly emphasize interaction and social reciprocity.

Our interdisciplinary ESDM team consists of speech language pathologists, occupational therapists, and physical therapists. Our program includes a speech-language pathologist who is the first and only clinician in South Dakota certified in introductory ESDM and many additional clinicians who have completed the ESDM Introductory Workshop.

### **Developmental domains addressed with ESDM:**

- Cognition
- Expressive communication
- Fine motor
- Gross motor
- Imitation
- Personal independence
- Play
- Receptive communication
- Social skills

### **Our ESDM program addresses concerns related to:**

- Autism spectrum disorder (ASD)

### **Referral information:**

- Script should say "Eval and Treat" for requested therapy service; can be for ST, OT, and/or PT. Write "ESDM" in notes.

### **Other pages to reference:**

- Applied Behavior Analysis, p. 17
- Autism Evaluations, p. 28
- Autism Screenings, p. 29
- Occupational Therapy, p. 18
- Physical Therapy, p. 20
- Psychology, p. 23
- Speech-Language Pathology, p. 24

# Feeding & Swallowing/Nutritional Therapy

## Locations:

### ■ **Sioux Falls, SD**

Phone: 605.444.9700

Fax: 605.444.9701

### ■ **Rapid City, SD**

Phone: 605.791.7400

Fax: 605.791.7401

### ■ **Sioux City, IA**

Phone: 712.226.2253

Fax: 712.226.2254

## Referral information:

- Script should say "ST/OT Eval and Treat." Diagnosis should be related to feeding concerns.

## Other pages to reference:

- Inpatient Rehabilitation Program, p. 8
- Intensive Therapy Program, p. 46
- Occupational Therapy, p. 18
- Psychology, p. 23
- Speech-Language Pathology, p. 24

LifeScope's Feeding and Swallowing program offers a interdisciplinary approach to the treatment of feeding and swallowing concerns. LifeScope offers Outpatient, Intensive Outpatient Day, and Inpatient\* Feeding Programs. Our team provides a comprehensive assessment of a variety of areas related to feeding and swallowing concerns, which may include oral motor skills, swallowing, sensory, self-feeding, and behavior modification. Our team of experts may include:

- Speech therapist
- Occupational therapist
- Clinical psychologist
- Clinical dietician
- Behavior analyst
- Consulting gastroenterologist/referring physician
- Nurse

## We address concerns related to:

- Anxiety related to feeding
- Avoidant Restrictive Food Intake Disorder (ARFID)
- Behavioral feeding issues
- Bottling
- Developmental skills for self-feeding
- Dysphagia - swallowing impairments
- Enhance parent/child mealtime interactions
- Food refusals
- Increasing volume and variety of foods that a child will eat
- Nutrition education and support
- Oral motor difficulties
- Parent training regarding feeding and mealtimes
- Promoting consistent mealtime acceptance
- Sensory issues related to eating
- Transitioning from tube to oral feeding

**Continued on Next Page**

# Feeding & Swallowing/Nutritional Therapy

**Outpatient Program:**

- Recommended for patients who have feeding and swallowing difficulties that can be managed and treated with a frequency of 1 to 3 therapy sessions per week
- Patients may begin here and later transition to an intensive program, if appropriate

**Intensive Outpatient Day Program:**

- 2- to 8-week program
- Recommended for patients who:
  - Have feeding difficulties that are severe enough to warrant high-frequency therapy
  - Patients ready for tube weaning
- Speech and occupational therapy sessions will take place 3 to 4 times a day, 5 days a week
- Patient and family break room is available for use between therapy sessions

*\* See Inpatient Rehabilitation Program (p. 8-9) for details regarding our inpatient feeding services*



# Seating & Wheeled Mobility

## Locations:

### ■ **Sioux Falls, SD**

Phone: 605.444.9700

Fax: 605.444.9701

### ■ **Rapid City, SD**

Phone: 605.791.7400

Fax: 605.791.7401

### **Referral information:**

- Script should say "PT/OT Eval and Treat."  
Write "Seating/Mobility" in notes.

### **Other pages to reference:**

- Assistive Technology, p. 41
- Complex Care/Spasticity Clinic, p. 31
- Occupational Therapy, p. 18
- Physical Therapy, p. 20
- Power Mobility, p. 48
- RISE Custom Solutions, p. 55
- TEAM Clinic, p. 37

Our custom seating and wheeled mobility services are led by a team of occupational and physical therapists with advanced training and experience in the evaluation and recommendation of manual and power wheelchair bases and seating systems of all types, for all ages and conditions.

Our clinical team has the following advanced certifications from RESNA (Rehabilitation Engineering and Assistive Technology Society of North America):

- ATP (Assistive Technology Professional)
- SMS (Seating and Mobility Specialist)

### **We address concerns related to:**

- Amputation
- Arthrogryposis
- Brain injury
- Cerebral palsy (CP)
- Deconditioning related to age or illness
- Degenerative neuromuscular diagnoses, including but not limited to:
  - Multiple sclerosis (MS)
  - Amyotrophic lateral sclerosis (ALS)
  - Parkinson's disease
  - Muscular dystrophy
- Genetic disorders
- Orthopedic disorders
- Spina bifida
- Spinal cord injury
- Other conditions resulting in impaired mobility

### **Services provided:**

- Power mobility evaluation, wheelchair selection, and training
- Advanced manual wheelchair mobility training
- Custom design and fabrication of equipment
- Custom positioning and molded seating systems
- Evaluation and recommendation of manual and power wheelchair bases of all types
- Evaluation and recommendation of supportive seating options
- Mobility device fitting
- On-site wheelchair and wheelchair-related equipment ordering through RISE Custom Solutions
- Pressure mapping for prevention and management of pressure ulcers
- Wheelchair seating simulation to ensure optimal fit

# TEAM Clinic (Tone Evaluation and Management)

## Locations:

### ■ **Sioux Falls, SD**

Phone: 605.444.9727

Fax: 605.444.9701

### **Providers:**

#### • **Julie A. Johnson, MD**

Medical Director of  
Rehabilitation Programs

#### • **Charlie Broberg, PA-C**

### ■ **Rapid City, SD**

Phone: 605.791.7400

Fax: 605.791.7401

### **Providers:**

#### • **Cristina Sanders, D.O.**

### **Referral information:**

- Please call 605.444.9727 for additional information or to refer.

### **Other pages to reference:**

- Occupational Therapy, p. 18
- Physical Medicine & Rehabilitation, p. 3
- Physical Therapy, p. 20
- Power Mobility, p. 48
- RISE Custom Solutions, p. 55
- Seating and Wheeled Mobility, p. 36

LifeScope's Tone Evaluation and Management (TEAM) Clinic is an interdisciplinary clinic led by Physical Medicine and Rehabilitation providers from Sanford Health and Monument Health. TEAM Clinic is designed to provide an interdisciplinary approach to the evaluation and non-surgical management of abnormal muscle tone and its effects on the patient's function, mobility, stability, pain, self-care or assisted care, and subsequent durable medical equipment needs across the lifespan.

### **On-site treatment options:**

- Physical medicine and rehabilitation services
- Baclofen pump management
- Botox injections
- Medication management
- Occupational therapy
- Physical therapy
- Speech-language pathology
- Orthotics and prosthetics
- Durable medical equipment evaluation and modifications
- Referrals and collaboration with other healthcare specialists, when appropriate
- Referrals for surgical intervention

### **We address concerns related to:**

- Brain injury
- Cerebral palsy (CP)
- Congenital brain malformations
- Developmental delays
- Dystonia
- Hemiparesis (stroke)
- Hypotonia
- Movement disorders
- Neurological illness and injury
- Neuromuscular illness or disease
- Spasticity
- Torticollis





# Specialty Services



# Aquatic Therapy

## Locations:

### ■ **Sioux Falls, SD**

Phone: 605.444.9700

Fax: 605.444.9701

LifeScape has a warm water therapy pool in Sioux Falls that averages 96° Fahrenheit, which is ideal for addressing physical and occupational therapy goals related to strengthening, stretching, balance, walking, and functional mobility. LifeScape's therapy pool is utilized by patients in both our inpatient rehabilitation and outpatient therapy programs. Aquatic therapy offers many benefits, including improving balance, muscle strength, and muscle flexibility as well as decreasing pain and abnormal muscle tone. The buoyancy of the water unweights the individual, which is ideal for exercising weak muscles and addressing skills that are difficult for the individual to perform on land.

### **We address concerns related to:**

- Balance and coordination impairments
- Chronic pain
- Developmental delays
- Difficulty walking and gait abnormalities
- Hypertonia, spasticity, and rigidity
- Hypotonia
- Muscle tightness and weakness
- Orthopedic conditions
- Post-surgical and post-injury rehabilitation related to neuromuscular and musculoskeletal impairments
- Sensory processing difficulties
- Other neurological and neuromuscular impairments

### **Referral information:**

- Script should say "Eval and Treat" for requested therapy service; can be for OT and/or PT. Write "Aquatic Therapy" in notes.

### **Other pages to reference:**

- Brain Injury Program, p. 10
- Inpatient Rehabilitation Program, p. 8
- Occupational Therapy, p. 18
- Physical Therapy, p. 20

# Assistive Technology

## Locations:

### ■ **Sioux Falls, SD**

Phone: 605.444.9700

Fax: 605.444.9701

### ■ **Rapid City, SD**

Phone: 605.791.7400

Fax: 605.791.7401

Assistive technology refers to devices, products, or equipment that is purchased, modified, or designed and fabricated to improve or maintain the functional ability of individuals with disabilities. LifeScape offers evaluation, recommendation, fabrication, and training of assistive technology devices and software for all ages and conditions. These services are supported by occupational therapists, speech-language pathologists, and physical therapists with advanced training and experience, including Assistive Technology Professional (ATP) certification from the Rehabilitation Engineering and Assistive Technology Society of North America (RESNA).

### **We address concerns related to:**

- Autism spectrum disorder (ASD)
- Brain injury
- Cerebral palsy (CP)
- Degenerative neuromuscular diagnoses, including but not limited to:
  - Amyotrophic lateral sclerosis (ALS)
  - Multiple sclerosis (MS)
  - Muscular dystrophy
  - Parkinson's disease
- Developmental/cognitive disabilities
- Genetic disorders
- Visual and hearing impairments

### **Services provided:**

- Alternative input devices
- Communication device evaluation/recommendation
- Computer access alternatives
- Custom designed and fabricated equipment
- Custom modification of equipment
- Device mounting and transport
- Home automation and environmental controls
- Integration of multiple technologies
- Switch evaluation and placement
- Voice recognition technologies

### **Other pages to reference:**

- Intensive Therapy Program, p. 46
- Occupational Therapy, p. 18
- Physical Therapy, p. 20
- Seating and Wheeled Mobility, p. 36
- Speech-Language Pathology, p. 24



# Augmentative & Alternative Communication (AAC)

## Locations:

### ■ **Sioux Falls, SD**

Phone: 605.444.9700

Fax: 605.444.9701

### ■ **Rapid City, SD**

Phone: 605.791.7400

Fax: 605.791.7401

### ■ **Sioux City, IA**

Phone: 712.226.2253

Fax: 712.226.2254

Augmentative and alternative communication (AAC) assessment is any method other than verbal speech that is used for communicating with another person. Our clinical team of speech-language pathologists and occupational therapists work to identify the most efficient and effective mode of communication for all people with communication needs, then follow-up with training in programming and using the device. AAC assessment is provided to determine and recommend methods, devices, aids, techniques, symbols, and strategies to represent and augment spoken and written language in ways that optimize communication.

AAC can supplement limited verbal speech. Limited motor skills are not an issue – some AAC is accessible through eye gaze or other small movements.

### **We address concerns related to:**

- Autism spectrum disorder (ASD)
- Brain injury
- Cerebral palsy (CP)
- Chromosomal abnormalities
- Degenerative neuromuscular diagnoses, including but not limited to:
  - Amyotrophic lateral sclerosis (ALS)
  - Multiple sclerosis (MS)
  - Muscular dystrophy
  - Parkinson's disease
- Developmental/cognitive disabilities
- Down syndrome
- Genetic disorders
- Speech delays
- Visual and hearing impairments

**Continued on Next Page**

### **Referral information:**

- Script should say "ST/OT Eval and Treat."  
Write "AAC" in notes.

### **Other pages to reference:**

- Assistive Technology, p. 41
- Occupational Therapy, p. 18
- Speech-Language Pathology, p. 24

# Augmentative & Alternative Communication (AAC)

**Services provided:**

- Communication device evaluation and recommendation
- Therapy involving low-tech and high-tech communication systems:
  - Picture cards
  - Sign language
  - Picture exchange communication (PECS®) System
  - Gestures
  - Topic boards
  - Eye-gaze technology
  - Voice amplification systems
  - Stuttering aids
  - Artificial larynx
  - Communication boards
  - Speech output software
  - Symbol-making software
  - Speech generating devices
- Switch evaluation and placement
- Device mounting and transport
- Voice banking for declining speech due to a progressive neuromuscular diagnosis

# Bowel & Bladder Therapy

## Locations:

### ■ **Sioux Falls, SD**

Phone: 605.444.9700

Fax: 605.444.9701

### ■ **Rapid City, SD**

Phone: 605.791.7400

Fax: 605.791.7401

LifeScape's Bowel and Bladder Therapy Program is led by a team of physical therapists, who have advanced training in pediatric pelvic floor dysfunction, functional gastrointestinal disorders, and fecal and urinary incontinence. We address a variety of bowel and bladder concerns for children ages 5 and older.

### **We address concerns related to:**

- Urinary incontinence
- Dysfunctional voiding
- Recurrent urinary tract infections
- Painful voiding
- Frequent urination
- Urinary urgency
- Nighttime bed wetting
- Fecal incontinence (including stool withholding)
- Chronic constipation
  - Three or fewer bowel movements per week
  - History of withholding or retaining stool
  - History of painful or hard bowel movements
  - Presence of a large amount of stool in the rectum
  - History of very wide stools that may plug the toilet

### **Services provided:**

- Comprehensive evaluation
- Biofeedback therapy for pelvic floor muscle coordination and strengthening
- Core strengthening
- Breathing coordination techniques, which may include addressing pushing strategies for having a bowel movement
- Comprehensive home program recommendations

### **Referral information:**

- Script should say "PT Eval and Treat."  
Diagnosis should be related to bowel/bladder concerns.

### **Other pages to reference:**

- Constipation Management Clinic, p. 32
- Physical Therapy, p. 20

# Constraint-Induced Movement Therapy (CIMT)

## Locations:

### ■ **Sioux Falls, SD**

Phone: 605.444.9700

Fax: 605.444.9701

LifeScape's Constraint-Induced Movement Therapy (CIMT) Program is led by a team of occupational therapists with over 12 years of experience in providing CIMT. CIMT is an evidence-based treatment for hemiplegia. The unaffected or less affected upper extremity is casted to promote use, strength and control of the affected arm and hand. CIMT is a 3-week process, where casting occurs for 2 weeks to focus on strengthening and use of the affected upper extremity, followed by 1 week of bi-manual training.

### **3-Week CIMT Program:**

- During casting of the unaffected or less affected upper extremity:
  - Children use the affected upper extremity to complete simple play and craft tasks that promote strength, range of motion, and control
  - One-on-one assistance is provided to ensure use of proper form to gain grasp control and prevent compensatory upper extremity movements
- During bimanual training:
  - Children use both hands to engage in various tasks, including self-care activities like dressing and grooming and play activities that require 2 hands
  - Instruction is provided for use of the affected upper extremity as a functional assist
- Treatment is most effective:
  - By age 2 for birth-related injuries
  - Within 1 year of injury for other injuries

### **LifeScape offers the following types of intensive CIMT programs:**

- Individual therapy
- Group therapy – offered during the summer

### **Conditions addressed:**

- Brain injury
- Brain tumor/infection
- Cerebral palsy (CP)
- Stroke
- Upper extremity hemiplegia

### **Referral information:**

- Script should say "OT Eval and Treat." Write "CIMT" in notes.

### **Other pages to reference:**

- Occupational Therapy, p. 18
- Splinting, p. 52



# Intensive Therapy Program

## Locations:

### ■ **Sioux Falls, SD**

Phone: 605.444.9700

Fax: 605.444.9701

### ■ **Rapid City, SD**

Phone: 605.791.7400

Fax: 605.791.7401

### ■ **Sioux City, IA**

Phone: 712.226.2253

Fax: 712.226.2254

## Referral information:

- Script should say "Eval and Treat" for requested therapy service; can be for ST, OT, and/or PT. Write "Intensive Therapy" in the notes.

## Other pages to reference:

- Brain Injury Program, p. 10
- Feeding and Swallowing, p. 34
- Occupational Therapy, p. 18
- Physical Therapy, p. 20
- Speech Therapy, p. 24

Our intensive therapy program is designed to provide physical, occupational, and/or speech therapy services at an increased frequency over a shorter duration of time than traditional therapy services, applying the principles of neuroplasticity to improve a child's functional abilities. On average, patients are seen 3 to 5 times per week over a 3- to 6-week period. The time and duration of each patient's intensive program is individualized based on the child's needs, endurance, tolerance, and age. Our therapists work with families to identify specific and meaningful goals which are addressed over the course of the therapy intensive.

## ***Our Intensive Therapy Program is appropriate for patients with a variety of diagnoses and concerns, including but not limited to:***

- Brain injury
- Cerebral palsy (CP)
- Genetic conditions
- Infections
- Muscular dystrophy
- Orthopedic conditions
- Post-surgical rehabilitation
- Spina bifida
- Stroke
- Other neurological and neuromuscular conditions

## ***Services provided:***

- Physical therapy to address:
  - Balance and coordination activities
  - Endurance and activity tolerance
  - Functional activities
  - Gait training
  - Post-surgical rehabilitation
  - Stretching and strengthening exercises
  - Transfer training
- Occupational therapy to address:
  - Balance and coordination activities
  - Functional activities of daily living
  - Post-surgical rehabilitation
  - Stretching and strengthening exercises
  - Transfer training
- Speech therapy to address:
  - Augmentative and alternative communication (AAC) device evaluation, trialing, and training
  - Functional communication skills
- Feeding therapy (Refer to p. 34)
- Use of specialized equipment including:
  - Solo-Step®
  - TheraSuit Method® Universal Exercise Unit

# Parent-Child Interaction Therapy (PCIT)

## Locations:

### ■ **Sioux Falls, SD**

Phone: 605.444.9700

Fax: 605.444.9701

Parent-Child Interaction Therapy (PCIT) is a short-term, specialized behavior management program designed for young children with behavioral and/or emotional difficulties and their families. PCIT teaches caregivers to manage their child's difficult behaviors, while increasing their positive behaviors. PCIT works with the child and caregiver together to improve behavior and reduce parenting stress.

### **We address concerns related to:**

- Attention deficit hyperactivity disorder (ADHD)
- Children who have been abused
- Generalized anxiety disorder
- Major life changes
- Oppositional defiant disorder (ODD)
- Separation anxiety
- Strained parent-child relationship

### **Treatment may focus on:**

- Increasing prosocial behaviors
- Increasing child self-esteem
- Increasing parental feelings of effectiveness
- Increasing positive interactions between parents and children
- Decreasing maladaptive and inappropriate behaviors

### **Services provided:**

- One-on-one coaching with a PCIT-certified therapist to address specific behavioral concerns
- Immediate feedback regarding parental interaction patterns

### **Referral information:**

- No script required for general psychology services; however, provider must call or send script to indicate patient's need for "PCIT."

### **Other pages to reference:**

- Psychology, p. 23

# Power Mobility

## Locations:

### ■ **Sioux Falls, SD**

Phone: 605.444.9700

Fax: 605.444.9701

### ■ **Rapid City, SD**

Phone: 605.791.7400

Fax: 605.791.7401

### **Referral information:**

- Script should say "PT/OT Eval and Treat."  
Write "Power Mobility" in notes.

### **Other pages to reference:**

- Assistive Technology, p. 41
- Complex Care/Spasticity Clinic, p. 31
- Occupational Therapy, p. 18
- Physical Therapy, p. 20
- Seating and Wheeled Mobility, p. 36
- TEAM Clinic, p. 37
- Wheelchair and Other Mobility Solutions, p. 62

LifeScape's Power Mobility Program is led by a team of occupational and physical therapists with advanced training and certifications in assistive technology and wheelchair seating and mobility. These experts employ a fleet of power wheelchairs equipped with technology and specialty controls that allow the user to drive using nearly any part of the body. We use a customized approach to address mobility issues for people of all ages with a variety of mobility-related diagnoses, including but not limited to:

- Arthrogryposis
- Brain injury
- Cerebral palsy (CP)
- Degenerative neuromuscular diagnoses, including but not limited to:
  - Amyotrophic lateral sclerosis (ALS)
  - Multiple sclerosis (MS)
  - Muscular dystrophy
  - Parkinson's disease
  - Spinal muscular atrophy (SMA)
- Genetic conditions
- Orthopedic disorders
- Spina bifida
- Spinal cord injury
- Other mobility-related concerns not addressed by manual wheelchair use

### **Services provided:**

- Power mobility evaluation
- Power mobility input device evaluation and selection
- Power mobility training

# Sensory Processing Disorder

## Locations:

### ■ **Sioux Falls, SD**

Phone: 605.444.9700

Fax: 605.444.9701

### ■ **Rapid City, SD**

Phone: 605.791.7400

Fax: 605.791.7401

### ■ **Sioux City, IA**

Phone: 712.226.2253

Fax: 712.226.2254

## Referral information:

- Script should say "OT Eval and Treat".  
Diagnosis should be related to sensory processing concerns.

## Other pages to reference:

- Occupational Therapy, p. 18

LifeScope occupational therapists are highly trained in evaluation and treatment of sensory processing disorders (SPD). SPD is a dysfunction in the way the nervous system receives messages from the sensory system and turns them into motor or behavioral responses. Misinterpretation of everyday sensory information like touch, smell, taste, and movement can be significant enough to affect aspects of everyday activities, including play, dressing, eating, and learning.

## ***We address a wide variety of sensory concerns, including, but not limited to, the following:***

- Poor regulation of responses to sensory inputs, resulting in withdrawal or strong negative responses that do not usually bother others
- Frequent bumping into, dropping, or knocking over things; awkward with motor movements or tasks; cannot gauge force needed to complete a task
- Postural disorder; seeming weaker than other children, poor balance, difficulty tracking with eyes, falling frequently
- Difficulty with planning, sequencing, and executing unfamiliar actions; awkward and poorly coordinated motor skills; difficulty following multiple step directions; reluctant to participate in sports, ride a bike, etc.

## ***Services provided:***

- Teach regulation of sensory system for school/activity performance
- Enhance self-esteem and self-accomplishments
- Improve performance in learning/developmental activities
- Improve strength, balance, and coordination
- Teach management of emotions and sensory preferences
- Organize self and environment(s)
- Improve transitions
- Develop or improve handwriting, visual, and fine motor skills
- Improve mealtime behaviors and increase variety of accepted foods



# Serial Casting

## Locations:

### ■ **Sioux Falls, SD**

Phone: 605.444.9700

Fax: 605.444.9701

### ■ **Rapid City, SD**

Phone: 605.791.7400

Fax: 605.791.7401

### ■ **Sioux City, IA**

Phone: 712.226.2253

Fax: 712.226.2254

## Referral information:

- Script should say "PT Eval and Treat - LE" or "OT Eval and Treat - UE."  
Write "Serial Casting" in notes.

## Other pages to reference:

- Complex Care/Spasticity Clinic, p. 31
- Occupational Therapy, p. 18
- Orthotics, p. 58
- Physical Medicine & Rehabilitation, p. 3
- Physical Therapy, p. 20
- Seating and Wheeled Mobility, p. 36
- Splinting, p. 52
- TEAM Clinic, p. 37

LifeScape's upper and lower extremity serial casting program offers consultative services from a physical medicine and rehabilitation provider, with physical or occupational therapists providing the serial casting intervention and any follow-up therapies, and an orthotist providing orthotic interventions, as needed.

Serial casting is a process in which a physical or occupational therapist applies repeated casts, each cast providing a progressive stretch, to the ankle, knee, elbow, wrist, and/or hand. Casts are removed and a new cast put on approximately once per week until the range of motion goals are achieved or change is not occurring.

## Goals of serial casting:

- Improve joint range of motion and alignment
- Prepare for use of splints or orthoses
- Promote functional movement

Patients typically wear casts an average of 4 weeks, with length of casting time increased or decreased based on individual needs. Post-casting management may include bracing, a home exercise program, and outpatient therapy.

## We address concerns related to:

- Toe walking when ankle range of motion limits use of orthotics needed to retrain gait pattern
- Pain and skin integrity issues with wear of current orthotics, braces, or splints
- Development of joint contractures at the ankle, contributing to pain, an atypical gait pattern, and/or loss of safe and efficient functional movement
- Joint contractures at the elbow, wrist, or hand which are causing pain, impacting hygiene or completion of activities of daily living, or impacting functional use.

# Social Skills Groups

## Locations:

### ■ **Sioux Falls, SD**

Phone: 605.444.9700

Fax: 605.444.9701

LifeScope's social skills groups offer an intensive practice in socialization, manners, self-awareness, emotion identification/regulation, and more. The 10-week group helps children build social skills for establishing new relationships and building bonds with same-aged peers. Children will learn the skills of turn-taking, active listening, problem-solving, and making appropriate requests. A clinical psychologist leads the age-based groups.

### **Indications a child may benefit from a social skills group:**

- Becomes angry easily
- Does not notice how others perceive him/her
- Has difficulty making new friends
- Has difficulty with social skills
- Has trouble fitting in
- Is shy
- Is unable to engage in or initiate conversations
- Plays alone
- Struggles with being rejected by other children
- Struggles with interacting and playing with peers

### **Details:**

- For children ages 4 to 16
- Groups are comprised of 4-6 children or teenagers similar in age
- The 10-week group sessions meet once a week for one hour
- Each child must be accompanied by a parent or guardian
- Prior to the start of the group, each child completes an intake evaluation to determine appropriateness or fit with the group

### **Referral information:**

- No script required.

### **Other pages to reference:**

- Psychology, p. 23

# Splinting

## Locations:

### ■ **Sioux Falls, SD**

Phone: 605.444.9700

Fax: 605.444.9701

### ■ **Rapid City, SD**

Phone: 605.791.7400

Fax: 605.791.7401

### ■ **Sioux City, IA**

Phone: 712.226.2253

Fax: 712.226.2254

Splinting for the upper extremities is provided by our occupational therapists and is used to support function, assist and/or increase range of motion, immobilize or prevent contractures, or protect the hand or arm.

Splinting is a process that includes assessing positioning needed, where enhanced strength or support may be needed, then fabricating a custom splint or measuring for a pre-fabricated splint. Specific needs of the individual determine which method and product is best. Splints may also be fabricated following a course of upper extremity serial casting or constraint-induced movement therapy (CIMT).

*See Serial Casting (p. 50) and Constraint-Induced Movement Therapy (p. 45) for additional details regarding these therapy programs.*

### **Services provided:**

- Evaluation, assessment, and measurement for an upper extremity splint
- Fabrication of splints, when applicable
- Initial fitting of splint and ongoing assessment and monitoring for fit, as needed

***An upper extremity splint may be recommended to address issues related to the following diagnoses, which can result in spasticity and limited active movement in the upper extremities:***

- Brain injury
- Brain tumor/infection
- Cerebral palsy (CP)
- Spinal cord injury
- Stroke
- Upper extremity hemiplegia

### **Referral information:**

- Script should say "OT Eval and Treat."  
Write "Splinting" in notes.

### **Other pages to reference:**

- Constraint-Induced Movement Therapy (CIMT), p. 45
- Occupational Therapy, p. 18
- Serial Casting, p. 50

# Visual Motor Therapy

## Locations:

### ■ **Sioux Falls, SD**

Phone: 605.444.9700

Fax: 605.444.9701

Binocular vision, eye coordination, or visual perceptual issues can affect reading, writing, balance, self-care independence, and general gross/visual motor skills, as well as self-esteem and peer relationships. Our team of occupational therapists can address visual-motor difficulties and any other related underlying factors that are impacting the child's daily life.

### **Indications a child may benefit from visual motor therapy:**

- Headaches
- Eye pain or fatigue
- Dizziness
- Words moving around the page when they read or write
- Difficulty picking up reading skills at the same pace as their peers
- Messy handwriting

### **Services provided:**

- Free visual-motor screens to determine if an occupational therapy evaluation is appropriate or if other referrals are necessary.
- Occupational therapy evaluation for visual-motor concerns
- Occupational therapy treatment consisting of:
  - Visual motor skills training
  - Strengthening binocular coordination and control
  - Use of occupation-based activities like play, writing and drawing tasks, and gross motor challenges
- Occupational therapy to address other underlying factors, including:
  - Sensory integration
  - Primitive reflexes
  - Motor planning
  - Fine motor skills

### **Referral information:**

- Script should say "OT Eval and Treat."  
Write "Visual Motor Therapy" in notes.

### **Other pages to reference:**

- Occupational Therapy, p. 18





# RISE Custom Solutions



Custom Solutions

RISE  
Custom Solutions



# Cranial Orthoses & CARE Clinic

## Locations:

### ■ **Sioux Falls, SD**

Phone: 605.444.9700

Fax: 605.444.9701

### ■ **Rapid City, SD**

Phone: 605.791.7400

Fax: 605.791.7401

### ■ **Sioux City, IA**

Phone: 712.226.2253

Fax: 712.226.2254

Cranial Remolding Orthosis (CRO) is a type of treatment in which a baby is fitted with a custom helmet to correct the shape of the skull. Helmet therapy is used to gently correct the shape of babies' skulls over time. RISE Custom Solutions is the region's leader in treating infants with cranial remolding helmets using Orthomerica's STARscanner™ and FDA-approved product line. The STAR® Family of Cranial Remolding Orthoses is used to treat positional plagiocephaly, brachycephaly, scaphocephaly and other head shape deformities in infants 3-18 months of age.

RISE Custom Solutions and LifeScape offer a team approach to the evaluation and treatment of plagiocephaly and torticollis with our CARE (Cranial Asymmetry Repositioning Evaluation) Clinic. These diagnoses are on the rise, can be difficult to detect, and often occur together. The clinical team of physical therapists and orthotists aim to provide comprehensive care for both diagnoses.

### **We address concerns related to:**

- Plagiocephaly
- Torticollis
- Brachycephaly
- Post-operative craniosynostosis
- Scaphocephaly

### **Services provided:**

- Prevention and treatment of plagiocephaly
- Orthotic intervention through the use of a custom Cranial Remolding Orthosis (CRO), including:
  - Taking images and anthropometric head shape measures with the following options:
    - STARscanner™ system using Class 1, eye-safe lasers
    - Portable SmartSoc® scanning capturing markers on a cranial sock
  - Fabrication and fitting of, as well as necessary patient care for, a custom-made STARband® remolding helmet from an FDA-certified manufacturer
- Physical therapy evaluation and treatment of torticollis and other contributing muscle imbalances, including:
  - Range of motion exercises
  - Education on repositioning to discourage the child's preferred position to address head shape concerns
  - Strengthening to decrease asymmetries

### **Referral information:**

- Script required prior to patient scheduling and should say "Helmet/PT Eval and Treat." Write "CARE Clinic" in notes.

### **Other pages to reference:**

- Orthotics, p. 58
- Physical Therapy, p. 20



# Orthotics

## Locations:

### ■ **Sioux Falls, SD**

Phone: 605.444.9700

Fax: 605.444.9701

### ■ **Rapid City, SD**

Phone: 605.791.7400

Fax: 605.791.7401

### ■ **Sioux City, IA**

Phone: 712.226.2253

Fax: 712.226.2254

## Outreach Clinics:

### ■ **Aberdeen, SD**

### ■ **Brookings, SD**

## Referral information:

- Script required prior to patient scheduling for all orthotic services.

## Other pages to reference:

- Complex Care/Spasticity Clinic, p. 31
- Cranial Orthoses & CARE Clinic, p. 57
- Occupational Therapy, p. 18
- Physical Medicine & Rehabilitation, p. 3
- Physical Therapy, p. 20
- Prosthetics, p. 60
- TEAM Clinic, p. 37

Our American Board for Certification (ABC)-certified orthotists specialize in custom lower and upper extremity bracing, as well as spinal and cranial issues. Our team of experienced practitioners will provide patients with the best and most appropriate solution to improve function and maintain proper position.

## We address concerns related to:

- Ankle injury
- Back pain and other concerns
- Brain injury
- Cerebral palsy (CP)
- Cranial concerns
- Flat feet
- Foot drop
- Foot injury
- Foot pain
- Gait impairments
- Knee pain
- Muscular dystrophy
- Neck pain and other concerns
- Plantar fasciitis
- Posterior tibial tendon dysfunction (PTTD)
- Progressive neuromuscular diagnoses
- Scoliosis
- Spina bifida
- Spinal cord injury (SCI)
- Stroke
- Toe-walking
- Upper limb control

**Continued on Next Page**

# Solutions

**Services provided:**

- Cranial Remolding
  - STARscanner™ system using Class 1, eye-safe lasers
  - SmartSoc® technology
  - Custom-made STARlight® and STARband® remolding helmets from an FDA-certified manufacturer
- Head Orthoses and Protective Helmets
- Knee Orthosis
  - Custom-made and off-the-shelf orthosis to control the knee
  - Patented systems from all major manufacturers, such as Ossur, Donjoy, Breg, Townsend, and more
- Lower Limb
  - Custom dynamic bracing systems
  - Custom ankle-foot orthoses
  - Custom knee-ankle-foot orthoses
  - Hip abduction orthoses
  - Reciprocating gait orthoses
- Pedorthic Foot Devices
  - Custom longitudinal and metatarsal orthoses (arch supports)
  - Pronation/supination orthoses
  - Sports orthotics
- Custom diabetic footwear
- Spinal
  - Cervical orthoses
  - Scoliosis orthoses
  - Thoracic Lumbar Sacral Orthosis (TLSO)
- Upper Limb
  - Flexion/extension orthoses
  - Pronation/supination orthoses
  - Shoulder orthoses
  - Elbow orthoses
  - Wrist orthoses

# Prosthetics

## Locations:

### ■ **Sioux Falls, SD**

Phone: 605.444.9700

Fax: 605.444.9701

### ■ **Rapid City, SD**

Phone: 605.791.7400

Fax: 605.791.7401

### ■ **Sioux City, IA**

Phone: 712.226.2253

Fax: 712.226.2254

## Outreach Clinics:

### ■ **Brookings, SD**

## Referral information:

- Script required prior to patient scheduling for all prosthetic services.

## Other pages to reference:

- Complex Care/Spasticity Clinic, p. 31
- Occupational Therapy, p. 18
- Orthotics, p. 58
- Physical Medicine & Rehabilitation, p. 3
- Physical Therapy, p. 20
- TEAM Clinic, p. 37

For children and adults needing prosthetics, our American Board for Certification (ABC)-certified prosthetists provide the right fit – the first time. We don't stop working with patients until they've reached their highest level of comfort and function.

## We address concerns related to:

- Congenital limb differences of hands, feet, arms, and legs
- Elbow disarticulation
- Hip disarticulation
- Knee disarticulation
- Partial foot amputation
- Partial hand amputations
- Partial or whole finger amputations
- Shoulder disarticulation
- Symes or ankle disarticulation
- Transfemoral amputation
- Transhumeral amputation
- Transradial amputation
- Transtibial amputation
- Wrist disarticulation

## Services provided:

- Immediate post-operative prosthetics and rigid dressings
- Lower limb prosthetics
  - Preparatory prostheses
  - Endoskeletal and exoskeletal systems
  - Anatomical socket designs
  - Microprocessor knee systems (C-Leg, Rheo Knee, etc.)
  - Silicone suction suspension systems
  - Flexible socket materials
  - Dynamic response feet
  - Ultralight components and materials
  - Activity-specific devices (swimming, rock climbing, running, etc.)

**Continued on Next Page**

**Services provided:**

- Upper Limb Prosthetics
  - Functional and passive systems
  - Body-powered systems
  - Cosmetic prosthetics
  - Myoelectric systems (iLimb, iDigits)
  - Partial finger prosthetics (Naked prosthetics)
  - Activity specific devices (hunting, archery, paddle sports, rock climbing, etc.)





# Wheelchairs & Other Mobility Solutions

## Locations:

### ■ **Sioux Falls, SD**

Phone: 605.444.9700

Fax: 605.444.9701

### ■ **Rapid City, SD**

Phone: 605.791.7400

Fax: 605.791.7401

## Referral information:

- Script required prior to patient scheduling for all services. For seating and wheeled mobility needs, script should say "PT/OT Eval and Treat."

## Other pages to reference:

- Assistive Technology, p. 41
- Complex Care/Spasticity Clinic, p. 31
- Inpatient Rehabilitation Program, p. 8
- Medically Complex Program, p. 12
- Occupational Therapy, p. 18
- Physical Medicine & Rehabilitation, p. 3
- Physical Therapy, p. 20
- Power Mobility, p. 48
- Seating and Wheeled Mobility, p. 36
- TEAM Clinic, p. 37

RISE Custom Solutions offers state-of-the-art technology and unparalleled expertise for people needing mobility assistance.

Each patient's durable medical equipment (DME) team is customized to their needs and may include seating and mobility specialists, Assistive Technology Professionals, occupational therapists, physical therapists, and equipment technicians. We are compassionate and driven to provide the greatest comfort and highest level of independence.

Having RISE Custom Solutions at LifeScape's outpatient Rehabilitation Center is a huge benefit for our patients, offering the latest technology, greatest expertise, and interdisciplinary collaboration for a "one-stop-shop" experience.

## We address concerns related to:

- Amputation
- Arthrogryposis
- Brain injury
- Cerebral palsy (CP)
- Deconditioning related to age or illness
- Degenerative neuromuscular diagnoses, including but not limited to:
  - Amyotrophic lateral sclerosis (ALS)
  - Muscular dystrophy
  - Multiple sclerosis (MS)
  - Parkinson's disease
  - Spinal muscular atrophy (SMA)
- Genetic disorders
- Orthopedic disorders
- Post-surgical concerns
- Spina bifida
- Spinal cord injury
- Other conditions resulting in impaired mobility

**Continued on Next Page**

# Wheelchairs & Other Mobility Solutions

**Services provided:**

- Medical Equipment
  - Standers
  - Positioning devices
  - Activities of daily living tools
  - Bathroom aids
  - Transfer boards
- Mobility Solutions
  - Manual and power wheelchairs
  - Custom seating cushions/best fit cushion and back support
  - Gait trainers and walking aids
  - Patient lifts
- Seating and Wheeled Mobility Services
  - Evaluation, recommendation, and fitting of manual wheelchair bases of all types
  - Evaluation, recommendation, and fitting of power wheelchair bases of all types
  - Evaluation, recommendation, and fitting of supportive seating/cushions
  - Advanced manual wheelchair mobility training
  - Pressure ulcer mapping, prevention, and solutions
  - Custom positioning and custom molded seating systems
  - Advanced alternative power mobility input device evaluation and training
  - Wheelchair seating simulation
  - On-site wheelchair equipment ordering through RISE Custom Solutions
  - Custom design and fabrication of equipment
  - Modifications for growth or change in health condition

# Custom Solutions

# LifeScape Executive Leadership



**Steve Watkins,**  
President and  
Chief Executive Officer



**Rebecca Weeldreyer, RN,**  
Director of Nursing



**Kimberly Marso,**  
*Ph.D, BCBA-D, LBA,*  
Chief Operating Officer



**Tisha DeGross, MBA, OTR/L,**  
Director of Rapid City  
Operations



**Kristin Tuttle, MS PT,**  
Vice President of Medical  
and Therapy Services



**Corey Camp,**  
Director of RISE  
Custom Solutions



**Megan Johnke, OTD, OTR/L,**  
Director of Therapy



**Stephanie Sherard,**  
*MA, CCC-SLP,*  
Director of Quality  
and Compliance



**Brenna Christiansen,**  
*MA, OTR/L,*  
Director of Therapy



**Amy Jensen,**  
Director of  
Revenue Cycles

# Medical Executive Committee



**Jennifer Haggar, MD,**  
Chief of Staff,  
Sanford Children's  
*Pediatrics*



**David Ermer, MD,**  
Medical Director,  
Sanford Health Psychiatry  
& Psychology Clinic  
*Pediatric Psychiatry*



**Courtney Jo Backer, MD,**  
Vice Chief of Staff,  
Avera Medical Group  
*Pediatrics*



**Julie A. Johnson, MD,**  
Medical Director,  
Sanford Health  
*Pediatric Rehabilitation*



**Joseph C. Vogel, MD,**  
Past Chief of Staff,  
Avera Medical Group,  
*Pediatrics*



**James Wallace, MD,**  
Medical Director,  
Sanford Children's  
Specialty Clinic  
*Pediatric  
Pulmonology*

# Our Clinicians | Physical Medicine & Rehabilitation



**Julie A. Johnson, MD,**  
Pediatric Rehabilitation,  
Medical Director of  
Rehabilitation Programs



**Charlie Broberg, PA-C,**  
Pediatric  
Rehabilitation



**Staci Schwingler,**  
**RN, BAN**



**Kristen Vail,**  
**RN, BSN**



# Our Clinicians | Children's Specialty Hospital



**Julie A. Johnson, MD,**  
Pediatric Rehabilitation,  
Medical Director of  
Rehabilitation Programs



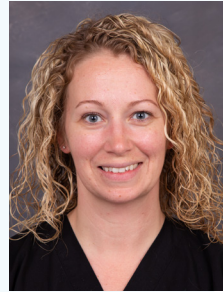
**Charlie Broberg, PA-C,**  
Pediatric  
Rehabilitation



**Rebecca Weeldreyer, RN,**  
Director of Nursing



**Morgan Jurgens,**  
Social Worker



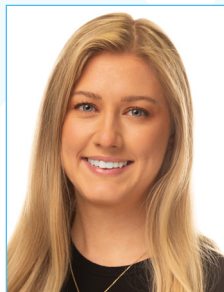
**Christy Lee, RN,**  
Care Coordinator



**Shannon VanDenBosh, RN,**  
Care Coordinator



**Elizabeth Volke,  
MS, RDN, LN**  
Director of Food and  
Nutrition Services



**Bailey Larson,  
MS, RD, LN**  
Clinical Dietician

# Our Clinicians | Physical Therapy



**Kayla Beacom,**  
**PT, DPT**



**Jeanna Becker,**  
**PT, DPT**



**Melissa Beckstrom,**  
**PT, DPT**  
Therapy Manager



**Teresa Butler,**  
**PT, DPT, COMT**  
*Certification in Orthopedic  
Manual Therapy*



**Monica Christensen,**  
**PT, DPT**  
Therapy Lead



**Alissa Colshan,**  
**PT, DPT**



**Pamela Dahm,**  
**MS, PT, ATP/SMS, CBIS**  
*RESNA-certified Assistive Technology  
Professional/Seating & Mobility Specialist;  
BIAA Certified Brain Injury Specialist*



**Susan Deutsch,**  
**PT, DPT**



**Nicole Koskovich,**  
**PT, DPT**  
Program Development  
Manager



**Kathy McCarthy,**  
**PT, DPT**



**Sarah Peabody,**  
**PT, DPT, ATC**  
*Certified Athletic Trainer*



**Stephanie Prinsen,**  
**PT, DPT**

# Our Clinicians | Physical Therapy



**Emily Rohmiller,**  
**PT, DPT**



**Rebeca Schmitz,**  
**PT, DPT, CBIST**  
Therapy Lead  
*BIAA Certified Brain Injury  
Specialist Trainer*



**Tayler Sokulski,**  
**PT, DPT**



**Christine Stephenson,**  
**PT, DPT**



**Sharon Thompson,**  
**PT, DPT, ATC**  
*Certified Athletic Trainer*

## Our Physical Therapists have advanced training in:

- Assessment and treatment of:
  - Autism spectrum disorders
  - Brain injury
  - Cerebral palsy
  - Idiopathic toe-walking, including serial casting
  - Muscular dystrophy
  - Neuromuscular disorders
  - Torticollis treatment and cranial remodeling prevention
- Aquatic therapy
- Body-weight supported treadmill training, including LiteGait®
- Cardiopulmonary and postural control strategies in the pediatric patient
- Early intervention
- Functional mobility and positioning, including:
  - Adaptive equipment
  - Custom seating systems
  - Gait development and training
  - Gait trainer and stander evaluations
  - Positioning and mobility equipment
- Kinesio Taping® Method
- Neuro-Developmental Treatment (NDT)
- Orthotic and prosthetic assessment
- Pediatric functional gastrointestinal disorders
- Pediatric incontinence and pelvic floor dysfunction
- Physical agent modalities
- Safety Care®
- Solo-Step®
- Tone management
- TheraSuit Method® Universal Exercise Unit



# Our Clinicians | Occupational Therapy

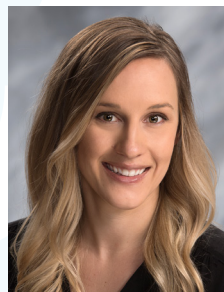


**Megan Aesoph,**  
**OTD, OTR/L**

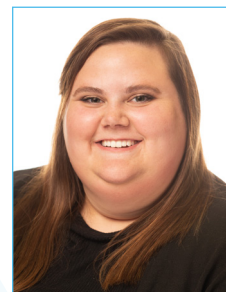


**Jill Barron,**  
**OTR/L, ATP/SMS**

*RESNA-certified Assistive Technology  
Professional and Seating  
& Mobility Specialist*



**Rebecca Bradsky,**  
**OTD, OTR/L**



**Erin Buse,**  
**OTD, OTR/L**



**Justine Cleveland,**  
**MS, OTR/L**



**Jessyca Conaway,**  
**MS, OTR/L**  
Therapy Manager



**Krista Crook,**  
**OTD, OTR/L, CBIS**

*BIAA Certified  
Brain Injury Specialist*



**Julie Ermer,**  
**MS, OTR/L**

*AOTA Autism  
Level III Badge*



**Christine Hanson-Harder,**  
**MS, OTR/L**



**Theresa Helfenstein,**  
**OTR/L**

# Our Clinicians | Occupational Therapy



**Lana Hendricks,  
MS, OTR/L**



**Kelsie Kallhoff,  
MS, OTR/L**



**Arlen Klamm,  
OTR/L, ATP/SMS**

Assistive Technology Coordinator  
*RESNA-certified Assistive Technology  
Professional and Seating & Mobility Specialist*



**Robin Mills,  
OTR/L**

*Certified in Neuro-Developmental  
Treatment, Certified in Sensory  
Integration & Praxis Test (SIPT)*



**Jessica Moum,  
MS, OTR/L, CBIS**

*BIAA Certified  
Brain Injury Specialist*



**Kristina Neumann,  
OTD, OTR/L**



**Tasvira Patel,  
OTR/L**



**Sabrina Phillips,  
OTR/L**

*Certified in Neuro-Developmental  
Treatment*



**Robyn Privett,  
MS, OTR/L, CBIS**

*BIAA Certified  
Brain Injury Specialist*



**Kaylee Saltmarsh,  
MS, OTR/L**



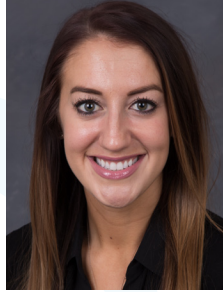
**Alex Schema,  
MOTR/L**



# Our Clinicians | Occupational Therapy



**Hannah Schramm,**  
**OTD, OTR/L**



**Christina Silver,**  
**OTD, OTR/L**



**Michelle Sinning,**  
**MS, OTR/L**

*Certified Level 1 Handwriting  
Without Tears® Specialist*



**Nicole Sowards,**  
**MS, OTR/L**



**Laura Steiner,**  
**MOT, OTR/L**



**Jeanie Utley,**  
**MS, OTR/L**



**Dana Vandenberg,**  
**OTD, OTR/L**

## Our Occupational Therapists have advanced training in:

- Aquatic therapy
- Assessment and treatment of:
  - Autism spectrum disorders
  - Brain injury
  - Neuromuscular disorders
- Assistive technology
- Autism Diagnostic Observation Schedule (ADOS®-2) administration
- Cardiopulmonary and postural control strategies in pediatrics
- Cortical visual impairment
- Dysgraphia
- Early intervention
- Early Start Denver Model (ESDM) for young children with autism
- Executive dysfunction
- Feeding disorders in pediatrics, including:
  - Anxiety & feeding disorders: Avoidant Restrictive Food Intake Disorder (ARFID)
  - Beckman Oral Motor
  - Behavioral InTEgrated with Speech Approach (BITES®) for feeding
  - Food chaining
  - Sequential Oral Sensory (SOS)® Approach to Feeding
- Functional mobility, seating, and positioning
- Handwriting Without Tears®
- Interoception
- Kinesio Taping® Method
- Neuro-Developmental Treatment (NDT)
- Orthotic/prosthetic management
- Pediatric constipation management
- Pediatric hand therapy
- Physical agent modalities
- Primitive reflex integration
- Routine Task Inventory
- Safety Care®
- Sensory integration
- TEAACH Method
- Therapeutic Listening®
- TheraSuit Method® Universal Exercise Unit
- Upper extremity splinting and serial casting
- Vestibular-visual-auditory integration
- Visual rehabilitation for pediatrics

# Our Clinicians | Speech-Language Pathology



**Heather Bradley,  
MS, CCC-SLP**



**Melissa Carrier-Damon,  
MA, CCC-SLP, BCS-S**  
Program Development Manager  
*Board Certified in Swallowing & Swallowing  
Disorders, Certified in VitalSim®*



**Cassandra Donahoe,  
MA, CCC-SLP**



**Teresa Gray,  
MA, CCC-SLP**



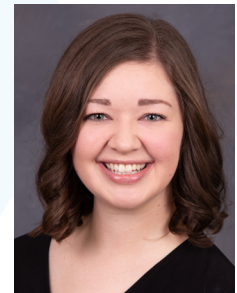
**Heather Hewitt,  
MS, CCC-SLP, CBIS**  
Therapy Lead  
*BIAA Certified Brain Injury  
Specialist, Certified in VitalSim®*



**Emilie Norton,  
MA, CCC-SLP**



**Susan Peterson,  
MA, CCC-SLP**  
*Certified in Introduction  
to PROMPT®,  
Certified in LSVT Loud®*



**Kara Polasky,  
MA, CF-SLP**



**Abbey Pratt,  
MS, CF-SLP**



**Linda Reurink,  
MA, CCC-SLP**  
Therapy Lead



**Hannah Stepanek,  
MS, CCC-SLP**



**Jaime Stratman,  
MA, CCC-SLP**  
*Certified in VitalSim®*

# Our Clinicians | Speech-Language Pathology



**Pennie Tesch, MA, CCC-SLP**  
Therapy Manager  
Certified in VitalSim®



**Jennifer VanDenBerg, MS, CCC-SLP**



**Carrie Vermeer, MA, CCC-SLP, CBIS**  
BIAA Certified  
Brain Injury Specialist,  
Certified in VitalSim®



**Beth Wienhold, MA, CCC-SLP**



**Megan Wiessner, MA, CCC-SLP**  
Therapy Manager  
Early Start Denver Model  
(ESDM) Certified Therapist



**Kristen Wilen, MA, CCC-SLP**

## Our Speech-Language Pathologists have advanced training in:

- Assessment and treatment of:
  - Autism spectrum disorders
  - Brain injury
  - Neuromuscular disorders
- Augmentative and alternative communication (AAC)
- Autism Diagnostic Observation Schedule (ADOS®-2) administration
- Early intervention
- Early Start Denver Model (ESDM) for young children with autism
- Feeding/swallowing disorders in pediatrics, including:
  - Anxiety & feeding disorders: Avoidant Restrictive Food Intake Disorder (ARFID)
  - Beckman Oral Motor
  - Behavioral InTEgrated with Speech Approach (BITES®) for feeding
  - Critical thinking in dysphagia management
  - Enteral tube weaning
  - Feeding and nutrition for infants with special needs
  - Free water protocol
  - International Dysphagia Diet Standardization Initiative (IDDSI)
  - Managing challenging behaviors during mealtimes
  - Neuromuscular Electrical Stimulation (NMES), including VitalStim® & sEMG
  - Oral motor/sensory motor approach to feeding
  - Sequential Oral Sensory (SOS)® Feeding Approach
  - SOFFI®
  - TalkTools®
- PROMPT® training (PROMPTs for Restructuring Oral Muscular Phonetic Targets)
- Kaufman Speech-to-Language Protocol
- Language strategies for emergent communicators
- LSVT Loud®
- Maximal Contrast Phonological Approach
- Message banking
- Passy Muir Valve, tracheostomies, & ventilators
- Picture Exchange Communication (PECS)®
- Safety Care®



# Our Clinicians | Clinical Psychology



**Aimee Deliramich,**  
*PhD*



**Karissa Jensen,**  
*PhD*



**Suzanne Keizer,**  
*PsyD, MSCP*



**Arianna Sparks,**  
*PhD, LP, HSP*  
*Certified in Parent-Child  
Interaction Therapy (PCIT)*

## Our Licensed Clinical Psychologists have advanced training in:

- Assessment and treatment of:
  - ADHD
  - Anxiety
  - Autism spectrum disorders
  - Brain injury
  - Depression
- Autism Diagnostic Observation Schedule (ADOS®-2) administration
- Behavioral approach to disruptive behaviors
- Clinical psychopharmacology
- Cognitive behavioral therapy
- Feeding & swallowing disorders, including Avoidant Restrictive Food Intake Disorder (ARFID)
- Medical and integrated health psychology
- Parent-Child Interaction Therapy (PCIT)
- Pediatric constipation management
- Psychological, intellectual, and cognitive testing and assessment
- Safety Care®

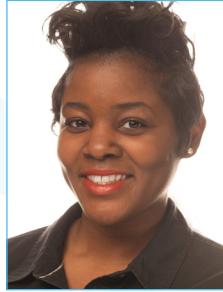


# Our Clinicians | Behavior Analysis



**Atalie Arnold,  
MS, BCBA, LBA**

*Certified Safety Care Trainer*



**Amanda Brown,  
MS, BCBA, LBA**



**Krista Brajkovich Jacobs,  
MS, BCBA, LBA**



**Noelle Jacobs,  
MS, BCBA, LBA**



**Darcie Knight,  
Ed.S., BCBA, LBA**

*Therapy Manager  
Certified Safety Care Trainer*



**Ali Saban,  
MA, BCBA, LBA**

*Certified Safety Care Trainer*



**Katie Spellmeyer,  
MA, BCBA, LBA**

## Our Behavior Analysts have advanced training in:

- Assessment and treatment for skill acquisition and/or severe problem behavior
- Discrete Trial Training (DTT)
- Early intervention
- Essential For Living Assessment/Curriculum
- Food selectivity and food refusal
- Functional communication training (FCT)
- Practical Functional Assessment/Skill-Based Treatment (PFA/SBT)
- Preschool Life Skills (PLS) Curriculum
- Safety Care®
- Social skills intervention
- Treatment of severe challenging behavior in people with intellectual disabilities
- Verbal behavior (VB) approach

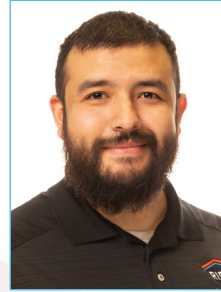
# Our Clinicians | RISE Custom Solutions



**Brad Bracewell, CO,**  
Certified Orthotist



**Mark Dahm,**  
Rehab Technician



**Art Diaz-Henderson,**  
Rehab Technician



**Shawn Frewaldt,**  
**MS, PT, ATP/SMS,**  
Clinical Equipment Specialist  
*RESNA-certified Assistive Technology  
Professional & Seating & Mobility Specialist*



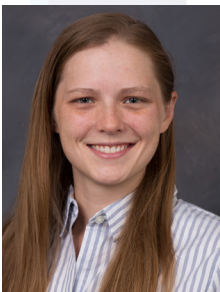
**Bob Johansen, BOCO,**  
Certified Orthotist



**Derek Martin, ATP,**  
Clinical Equipment  
Specialist



**Chris Rokeh, PTA, ATP,**  
Clinical Equipment  
Specialist



**Rachel Smith, CPO,**  
Certified Prosthetist  
& Orthotist



**Mark Swanstrom,**  
**CP, BOCO,**  
Certified Prosthetist  
& Orthotist



**Annette Vollan-Kerber,**  
**PT, MS, CFo,**  
Cranial Remolding  
Practitioner



# Hospital & Clinic Photos





# Hospital & Clinic Photos



◀ **Therapy Gym**  
26th St., Sioux Falls, SD

**Patient Room** ▶  
Children's Specialty  
Hospital, Sioux Falls, SD



**Therapy Pool**  
26th St., Sioux Falls, SD





# Hospital & Clinic Photos



◀ **Motor Gym**  
18th St., Sioux Falls, SD

**Park Room**  
41st St., Sioux Falls, SD



◀ **Parallel Bars/Gym**  
Rapid City, SD



**Therapy Gym** ▶  
18th St., Sioux Falls, SD





# Hospital & Clinic Photos



◀ **Sensory Gym**  
18th St., Sioux Falls, SD

**Sensory Gym**  
41st St., Sioux Falls, SD  
▼



**Sensory Gym**  
Sioux City, IA  
▼



**Feeding Therapy Kitchen** ▶  
Sioux City, IA





# Hospital & Clinic Photos



◀ **Scanner Room**

18th St., Sioux Falls, SD

**Snoezelen Multi-Sensory Room**

41st St., Sioux Falls, SD



**RISE Custom  
Solutions Shop**  
Rapid City, SD



**Seating Room** ▶  
18th St., Sioux Falls, SD







◀ **Playground**  
26th St., Sioux Falls, SD

**Motor Gym**  
41st St., Sioux Falls, SD  
▼



▲ **Playground**  
41st St., Sioux Falls, SD



# Additional Services at LifeScape

Services & Supports	Description
<b>Residential Services for Children &amp; Young Adults</b>	Comprehensive intensive services for children and adolescents with complex developmental, behavioral, and intellectual disabilities, as well as co-occurring mental health or medical conditions.
<b>Residential Services for Adults</b>	Options include: Supported Living (in a home or apartment of choice); Supervised Apartments (daily supports); 24-hour Residential Living (supports provided 24 hours, 7 days/weeks). Specialized homes for people with brain injury, dementia, 24/7 nursing needs, and autism. Shared Living, pairing a person or family to share their home with an adult who has a disability.
<b>Specialty School</b>	Specialized learning environments that provide individualized educational services for children and adolescents with a broad range of intellectual disabilities, behavioral challenges, and medical needs. "Essential for Living," a functional skills curriculum, provides a customized learning program for each student.
<b>Pathways to Life</b>	Intensive "transition to adulthood" instruction for high school students. Community/citizen skills, functional application of academic content, and skills for independence at work, home and the community are emphasized. The "Essential for Living" curriculum assesses, tracks, and helps build skills.
<b>Supported Employment</b>	Vocational skills exploration/training, job coaching, and supported/independent employment opportunities.
<b>Community Life/Day Services</b>	Opportunities for people to explore and experience meaningful activities during the day – recreation and leisure, meaningful relationships, new skills, volunteerism, and self-advocacy are examples. Options include specialized supports for people with brain injuries or autism.
<b>School-Based Contract Services</b>	School-based speech, occupational, and physical therapy and educational, behavioral, and psychological services for students in public schools and infants/toddlers at home or in daycares.
<b>Conflict-Free Case Management</b>	Conflict-Free Case Management services for people with intellectual/developmental disabilities, who receive services through the HCBS or CTS Choices Waiver in the following counties in S.E. South Dakota: Minnehaha, Lincoln, Yankton, Union, Clay, Turner, Hutchinson, Bon Homme, McCook, and Hanson.
<b>Family Support 360</b>	Supports to help children and adults with developmental disabilities remain connected to loved ones, living where they want and involved in their community. Some services include: service coordination, respite care, adaptive equipment, and home/vehicle modifications.
<b>Go Baby Go LifeScape</b>	Modified toy ride-on cars for children with mobility disabilities to promote play, environmental exploration, and socialization. Modifications allow the child to be positioned safely within the ride-on car and to independently drive the car.





<b>Ages Served</b>	<b>Funding Source</b>	<b>Location + Contact</b>
Birth - Age 21	<i>Medicaid, Self-Pay</i>	Sioux Falls, SD – 26th St. Location <b>605.444.9550</b>
Age 16 - End of Life	<i>Medicaid (HCBS Waiver), CTS, or Private Pay</i>	Sioux Falls, SD <b>605.444.9550</b>
Ages 3-21	<i>School Districts, Private Pay</i>	Sioux Falls, SD – 26th St. Location <b>605.444.9550</b>
Ages 18-21	<i>School Districts</i>	Sioux Falls, SD <b>605.444.9550</b>
Ages 16 & Up	<i>Vocational Rehabilitation</i>	Sioux Falls, SD <b>605.444.9550</b>
Ages 21 & Up	<i>Medicaid (HCBS Waiver)</i>	Sioux Falls, SD – Multiple Locations <b>605.444.9550</b>
Birth - Age 21	<i>School Districts, Medicaid</i>	Eastern SD – <b>605.444.9750</b> Western SD – <b>605.791.7400</b>
Age 16 - End of Life	<i>Medicaid (HCBS Waiver)</i>	Southeast South Dakota <b>605.444.9550</b>
Birth - End of Life	<i>Medicaid (Family Support Waiver)</i>	Southeast South Dakota <b>605.444.9550</b>
Ages 1-4 (older children considered on a case-by-case basis)	<i>LifeScape Foundation</i>	Sioux Falls, SD <b>605.444.9700</b>





With the **largest, most specialized team of pediatric therapy and rehabilitation experts** in South Dakota, **LifeScape provides the best care** for patients of **all ages and abilities**.

**300+**

Different Diagnoses  
Treated in Sioux Falls,  
Rapid City, and  
Sioux City.

**169**

Free Autism  
Screenings in  
Sioux Falls & Rapid City.

■ 114 Autism Evaluations



**49%** of

Pediatric Patients  
Treated Have  
3+ Diagnoses



**THE  
ONLY**

Pediatric Rehabilitation  
Hospital in  
South Dakota.

*\* Source of Stats:  
LifeScape's 2020  
Impact Report*

**45%** of  
Patients Served in the  
Inpatient Rehabilitation  
Program had a  
Brain Injury Diagnosis.



**3.16 HOURS**  
Daily Average of Therapy  
for Patients within  
the Children's  
Rehabilitation Unit.



**6,317**  
Total Patients



**77,544**  
Outpatient Clinic  
Visits Annually



*\* Source of Stats:  
LifeScape's 2020  
Impact Report*



# 90+

Licensed  
Professionals  
Working in Our  
Outpatient Clinics

# 100+

Students from  
26 colleges  
and universities  
participated in  
internships,  
externships,  
practicums, etc.

# 1,060

Total  
Employees

# #12

Employer in  
Sioux Falls

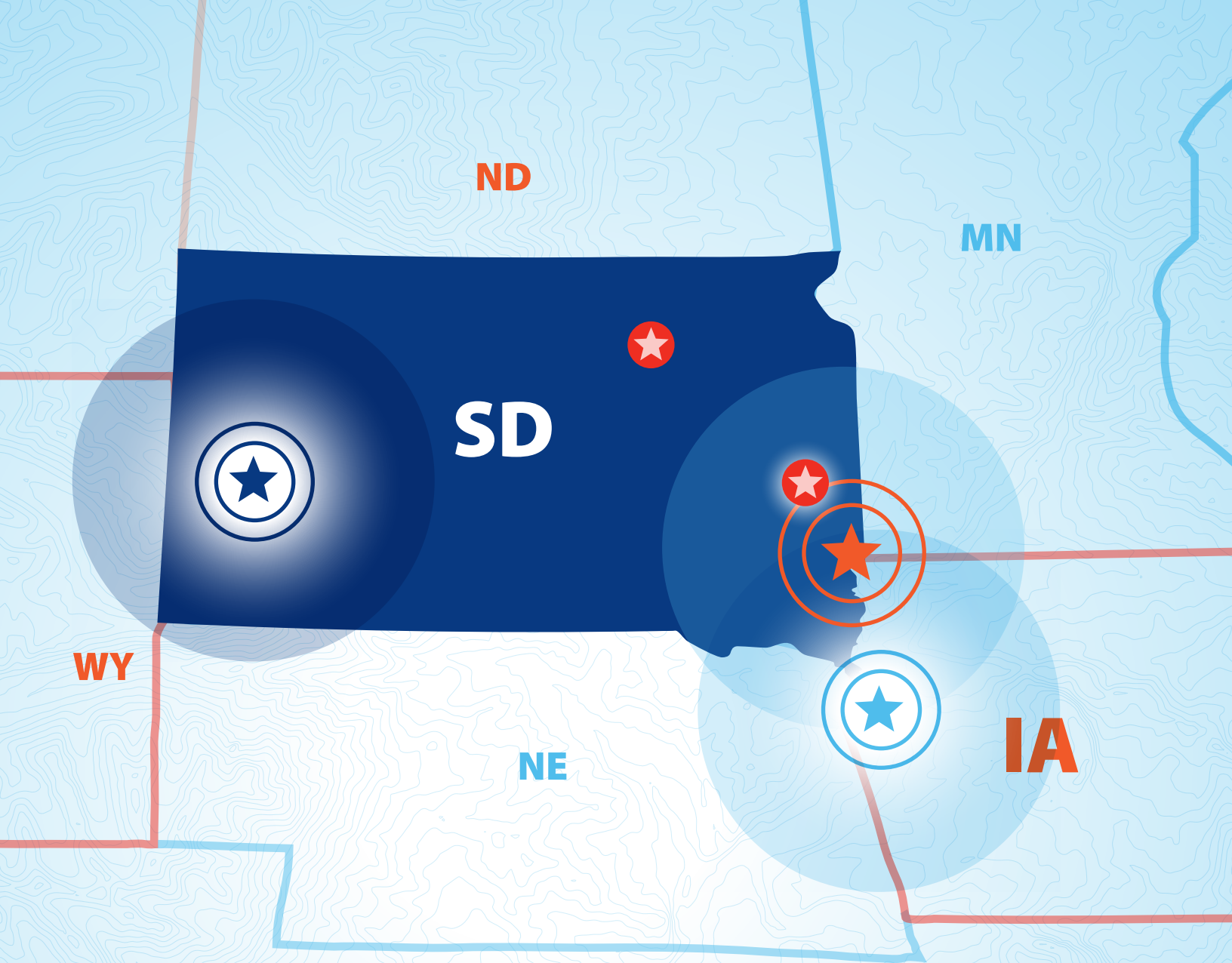
*\* Source of Stats:  
LifeScape's 2020  
Impact Report*

## Our Experts

- **American Board of Certification**  
Orthotics and Prosthetics Accreditation
- **Most Certified Seating & Mobility Specialists**  
with a Single Employer in North America
- **First & Only Certified Speech-Language Pathologist**  
in Swallowing & Swallowing Disorders in South Dakota
- **First & Only Certified Clinician** Certified  
in Early Start Model for Young Children  
with Autism in South Dakota
- **Eight Certified Brain Injury Specialists,**  
Credentialed by the Brain Injury  
Association of America

## Accreditations, Licensures, & Certifications

- **Council on Quality Leadership (CQL)**
- **Department of Human Services**
- **SD Department of Education**
- **SD Department of Health**
- **American Board of Certification: Orthotics  
& Prosthetics Accreditation**
- **American Speech-Language-Hearing Association (ASHA)**
- **Rehabilitation Engineering and Assistive  
Technology Society of North America (RESNA)**
- **Brain Injury Association of America (BIAA)**



#### Sioux Falls, SD

- Children's Specialty Hospital
- Rehabilitation Center
- Autism & Child Development Center
- RISE Custom Solutions



#### RISE Custom Solutions Outreach Locations:

- Brookings, SD
- Aberdeen, SD



#### Rapid City, SD

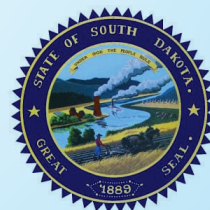
- LifeScape Outpatient Center
- RISE Custom Solutions



#### Sioux City, IA

- LifeScape AbleKids Pediatric Therapy
- RISE Custom Solutions

# Collaborative Relationships





# Collaborative Relationships







# Our Mission

Empowering people  
to live their best life.

## Our Vision

LifeScape will be an **innovative organization**, providing **exceptional services** and **creative solutions** for people with **varied needs** and **complex care across their life span**.

Through **collaborative partnerships**, LifeScape will become a **destination for research**, and the development, implementation, and training of **technology-based solutions** to **improve the lives of people we support**.

## Our Values

- *Integrity*
- *Compassion*
- *Respect*
- *Safety & Wellbeing*
- *Fiscal Responsibility*
- *Excellence*
- *Accountability*



# LifeScape

Creating Pathways. Improving Lives.



# Contact Us

**Provider-to-Provider  
Referral Hotline**

**605.444.9779**

## Sioux Falls

### **Outpatient Services:**

- Phone **605.444.9700**
- Fax **605.444.9701**

### **Hospital Services:**

- Phone **605.444.9556**
- Fax **605.444.9501**

## Rapid City

- Phone **605.791.7400**
- Fax **605.791.7401**

## Sioux City

- Phone **712.226.2253**
- Fax **712.226.2254**

[www.LifeScapeSD.org](http://www.LifeScapeSD.org) | [info@LifeScapeSD.org](mailto:info@LifeScapeSD.org)